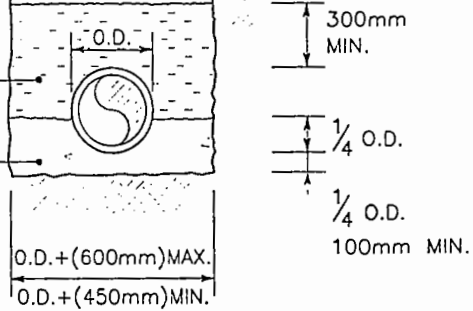


11: P:\proj\15\12\3\05\1\dwg\st-hwps\04 - BEDDING.DWG PLOT 1=1
 04-95
 ACAD14 11/20/99

APPROVED SELECT EXCAVATED OR IMPORTED GRANULAR MATERIAL PLACED IN 100mm LIFTS AND COMPACTED TO 95% MODIFIED PROCTOR DENSITY

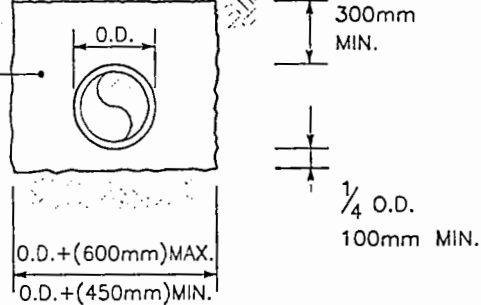
CONCRETE 20Mpa (3000 PSI) IN ALKALI SOILS; SULFATE RESISTANT CEMENT SHALL BE USED

CLASS 'A' BEDDING



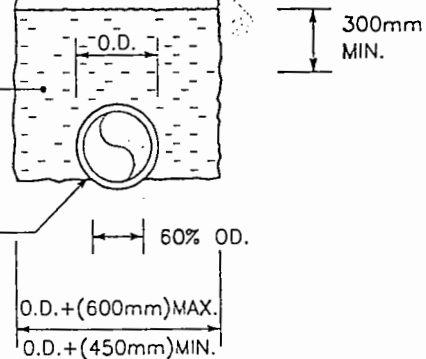
FINE GRANULAR MATERIAL PLACED IN 100mm LIFTS AND COMPACTED TO 95% MODIFIED PROCTOR DENSITY

CLASS 'B' BEDDING



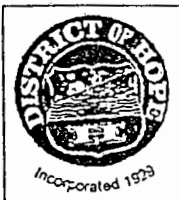
SELECT EXCAVATED OR IMPORTED GRANULAR MATERIAL PLACED IN 100mm LIFTS AND COMPACTED TO 95% MODIFIED PROCTOR DENSITY

CLASS 'C' BEDDING



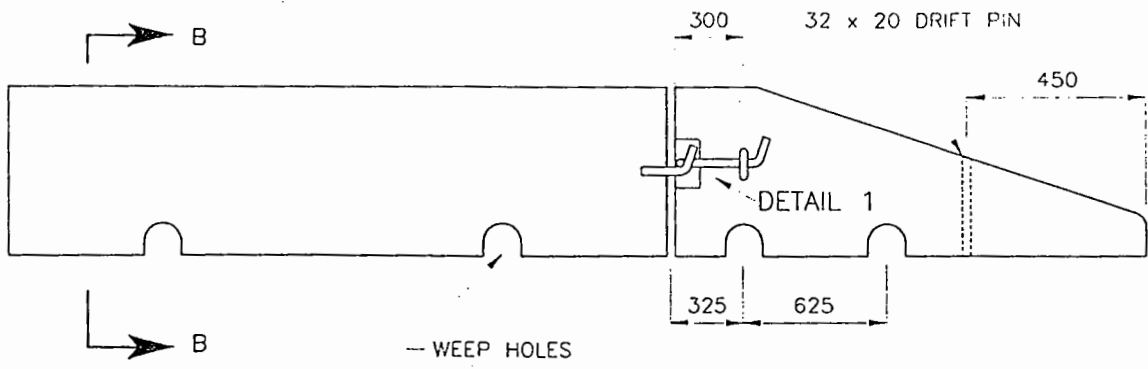
BOTTOM OF TRENCH SHAPED TO ACCEPT LOWER EXTERIOR OF PIPE

No.	REVISION	APPROVED
SCALE:	N.T.S.	
DATE:	JUNE, 1999	



DISTRICT OF HOPE

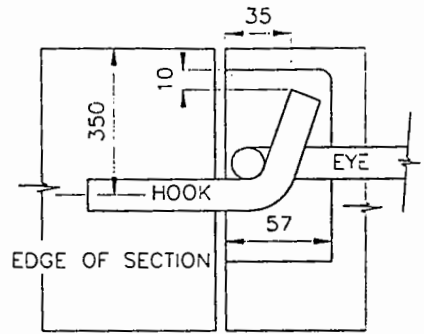
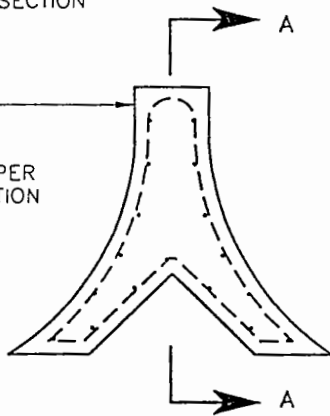
TITLE
PIPE BEDDING AND BACKFILL
SDG-4



INSTALLATION

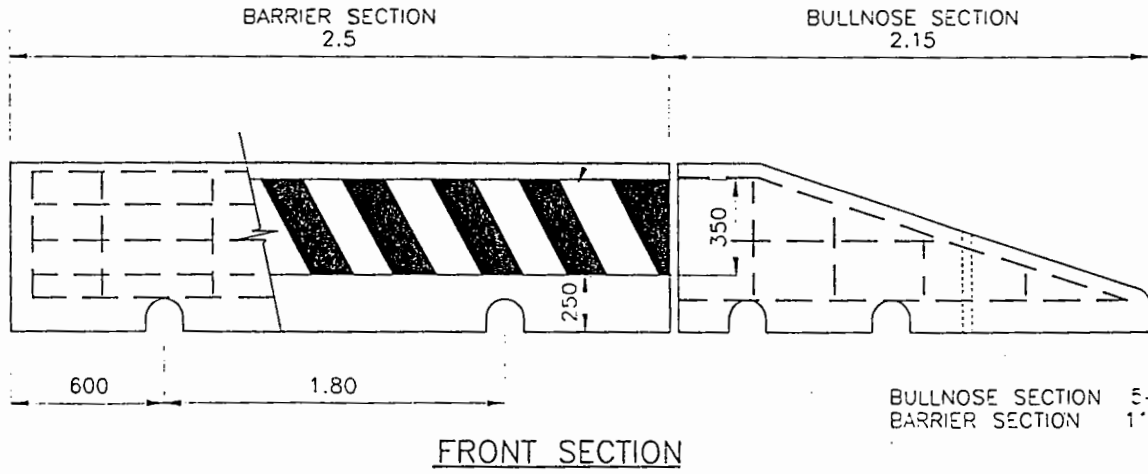
COMMENCE INSTALLATION WITH HOOK ON LEADING END - BULLNOSE SECTION TO BE PLACED FIRST. END OF BARRIER IS A BULLNOSE SECTION WITH EYE CONNECTOR.

690 x 2500 CONCRETE BARRIER
 REINFORCING STEEL AND STRUCTURAL DETAILS AS PER MINISTRY OF TRANSPORTATION AND HIGHWAYS BARRIERS TYPE CRB-M AND CRB-F OR APPROVED EQUAL.



DETAIL 1

BLACK AND YELLOW REFLECTORIZED PAINTING ON SIDEWALK FACE OF BARRICADE FOR FULL LENGTH



BULLNOSE SECTION 545 Kg
 BARRIER SECTION 1'32 Kg

ACAD14 11/01/99 09:45 ac-prod-pls-f:\proj\99-1-1-1\p05-1-1-1\p05-1-1-1\BARRP2.DWG PLOT 1=1

NO.	REVISED	APPROVED
SCALE	N.T.S.	
DATE	JUNE, 1999	



DISTRICT OF HOPE

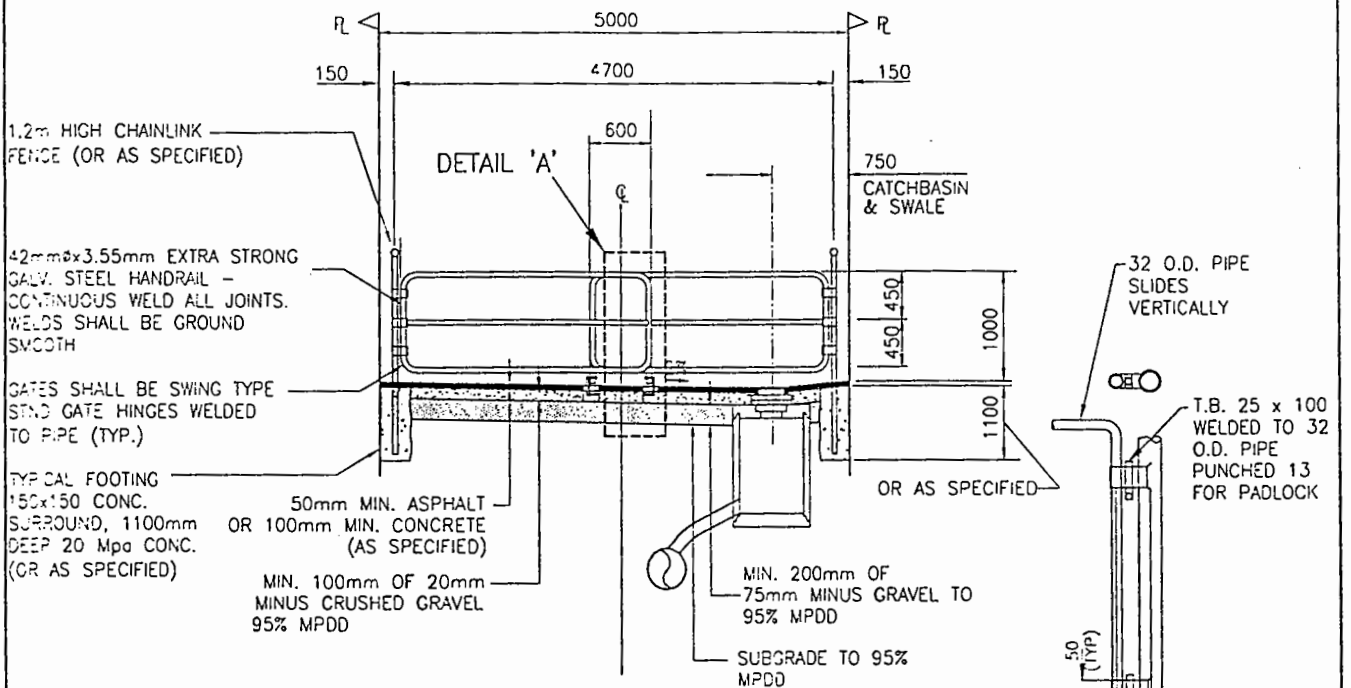
TITLE	PRECAST REINFORCED CONCRETE BARRIER
	SDG-6

PLOT 1-1

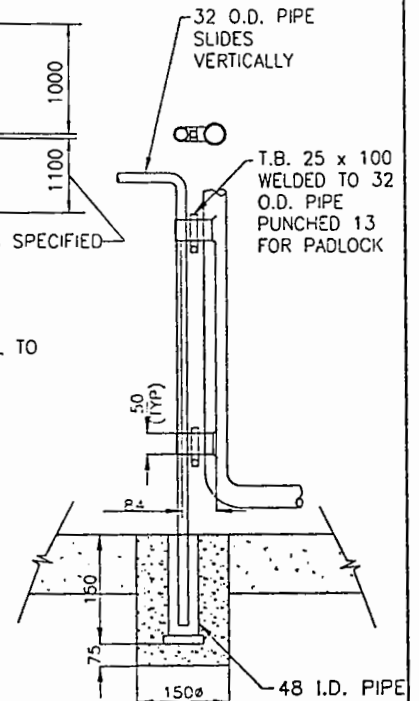
DATE APPROVED: 05/05/2005, DRAWN BY: MURWA, DWG

SCALE

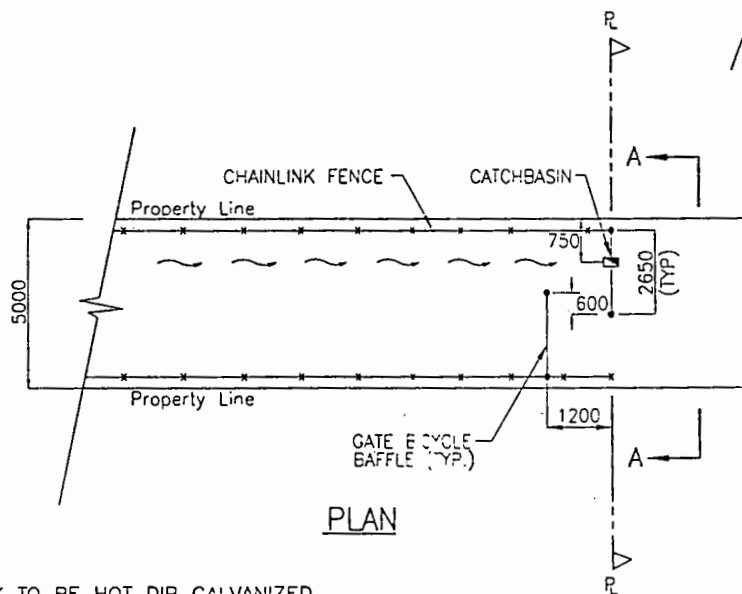
DATE



SECTION A



DETAIL A



PLAN

NOTE:

1. ALL METALWORK TO BE HOT DIP GALVANIZED. PAINT WELDS WITH GALVICON.
2. ALL DIMENSIONS ARE IN MILLIMETRES UNLESS OTHERWISE STATED.

NO.	REVISION	APPROVED
SCALE	N.T.S.	
DATE	JUNE, 1999	

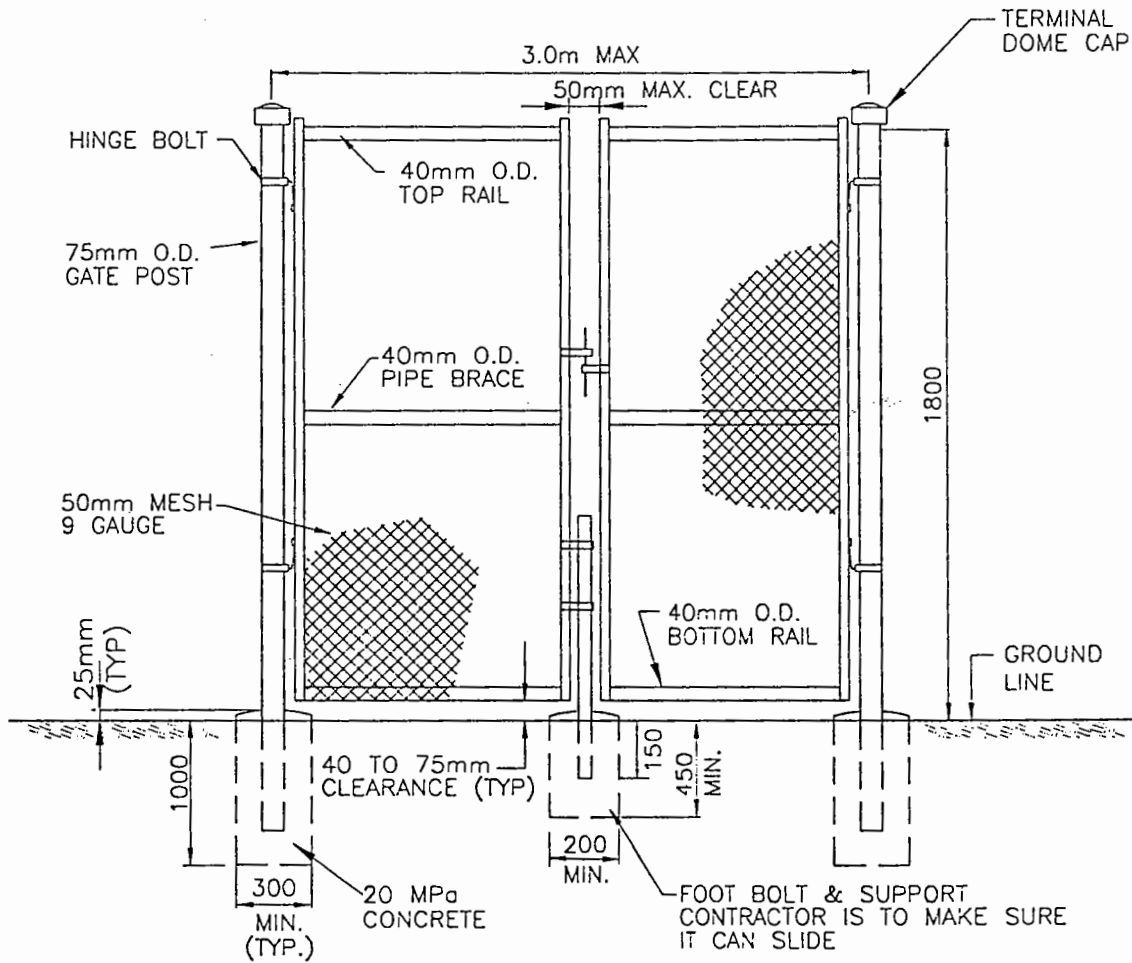


DISTRICT OF HOPE

FILE

TYPICAL 5.0m WALKWAY FOR EMERGENCY ACCESS

SDG-7



NOTES:

1. ALL POSTS AND PIPE SHALL BE SCHEDULE 40 WITH GALVANIZED ZINC COATING AT 550 g/m² SURFACE AREA.
2. FOOTINGS MIN. 200mm GREATER DIAMETER THAN POSTS.
3. DOUBLE GATE TO BE HINGED AND COMPLETE WITH LATCHING AND LOCKING MECHANISM FOR PADLOCK(PADLOCK SUPPLIED BY DISTRICT).

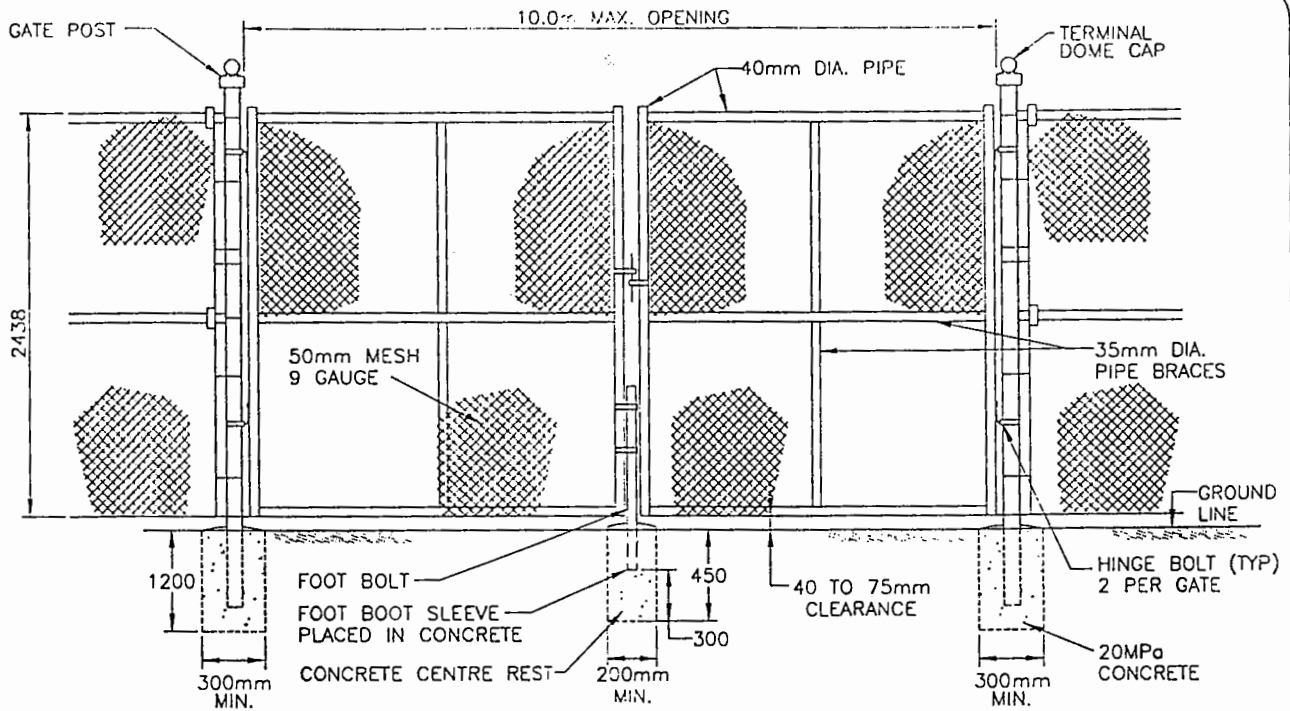
ACAD14 11/01/99 08:45 U:\PROJ\15\Vol1529\05\Drawings\Gate\Gate-Dbl-GATE.DWG PLOT 1=1

NO.	PERSON	APPROVED
SCALE:	N.T.S.	
DATE:	JUNE, 1999	

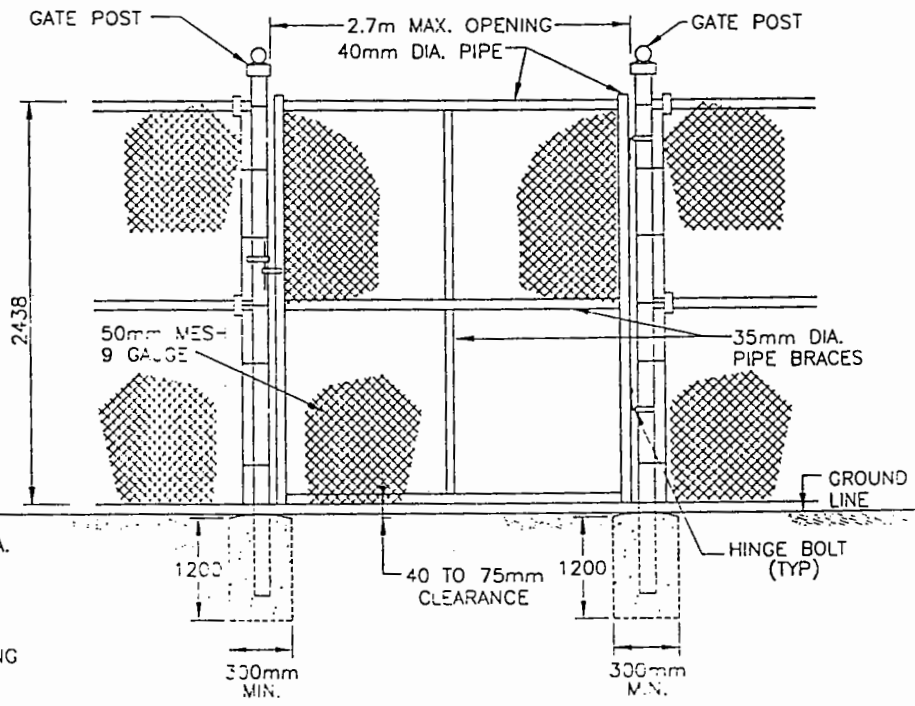


DISTRICT OF HOPE

TITLE	3.0m - 1.8m HIGH SECURITY DOUBLE GATE
	SDG-9



SECURITY DOUBLE GATE

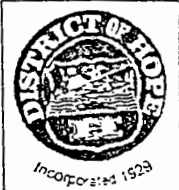


SECURITY SINGLE GATE

- NOTES:
1. GATE LEAVES UP TO 1.8m WIDE REQUIRE HORIZONTAL BRACE ONLY.
 2. GATE LEAVES OVER 1.8m WIDE REQUIRE HORIZONTAL AND VERTICAL BRACES.
 3. ALL POSTS AND PIPE SHALL BE SCHEDULE 40 WITH GALVANIZED ZINC COATING AT 550 g/m² SURFACE AREA.
 4. FOOTINGS MIN. 200mm GREATER DIAMETER THAN POSTS.
 5. STRAINING POSTS AT EQUAL SPACING TO 150m MAXIMUM.
 6. SIX TENSION BANDS AT ALL END AND CORNER POSTS AND AT GATE POSTS.

PLOT 1a1
 44M-GATES.DWG
 11/201/99

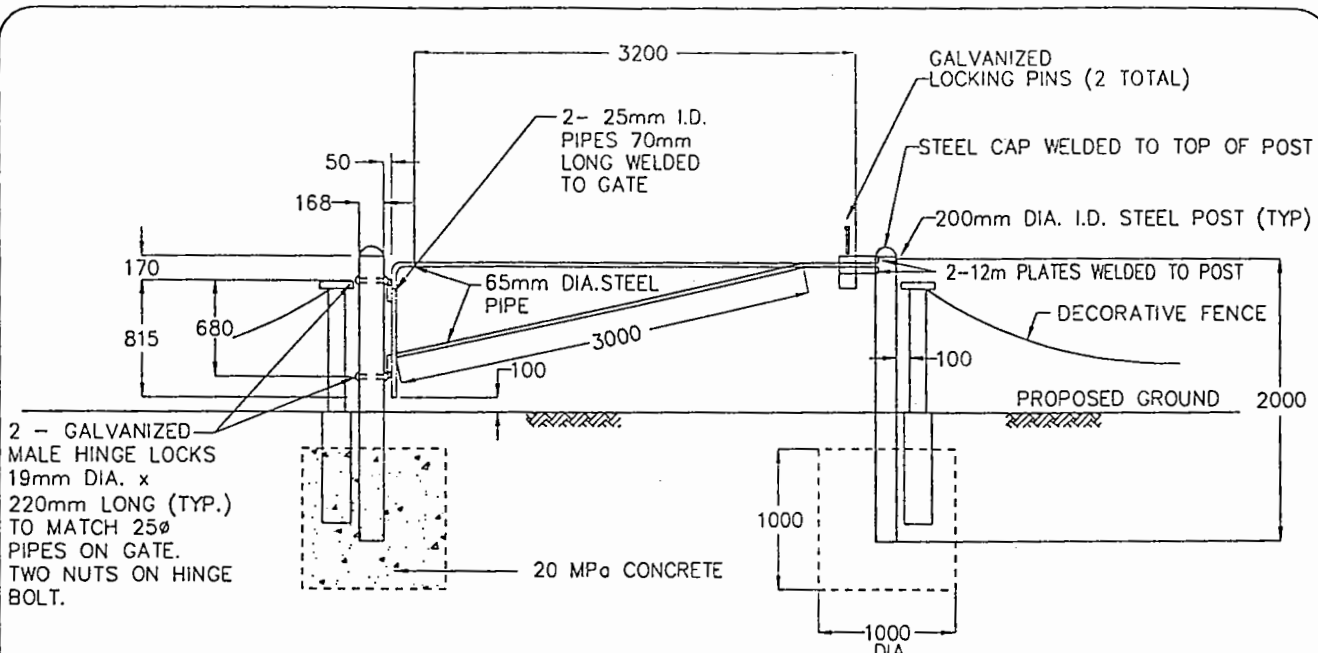
No.	REVISION	APPROVED
SCALE	N.T.S.	
DATE	JUNE, 1999	



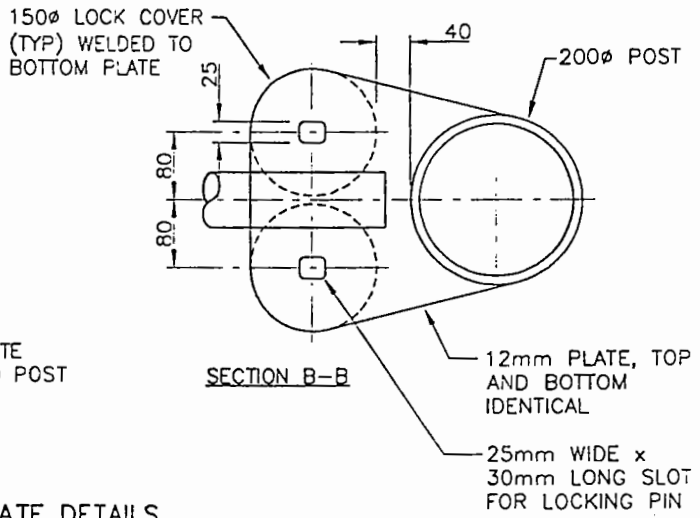
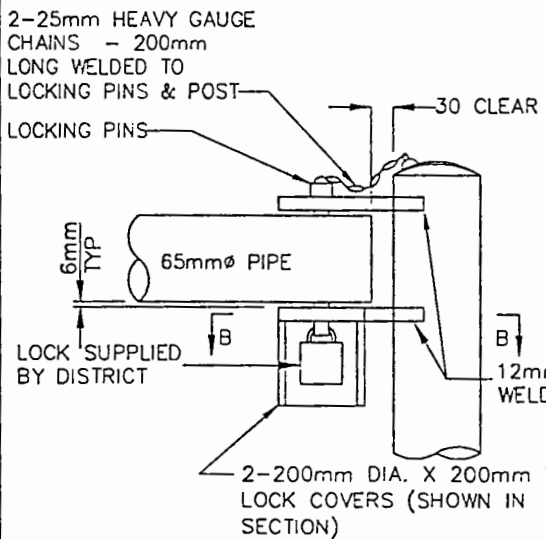
DISTRICT OF HOPE

2.44m HIGH SECURITY CHAIN LINK GATES
SDG-11

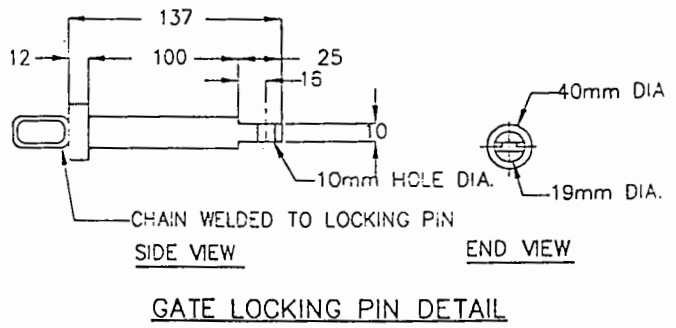
11: \\p001\cfs\61329\05\1-draws\std\hwp\SDG-120-ACCESS-GATE.DWG PLOT 1:1
 09-50
 11/09/99



2 - GALVANIZED MALE HINGE LOCKS 19mm DIA. x 220mm LONG (TYP.) TO MATCH 25Ø PIPES ON GATE. TWO NUTS ON HINGE BOLT.



GATE DETAILS



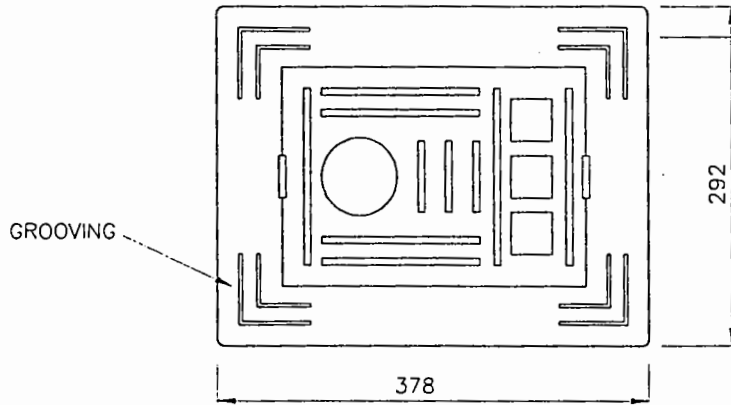
- NOTES:**
- 1) ALL GATE COMPONENTS TO HAVE PRIME COAT AND TWO COATS OF WHITE ENAMEL PAINT UNLESS GALVANIZED.
 - 2) ALL STEEL TO BE A MINIMUM OF A36 GRADE.

NO.	REVISION	APPROVED
SCALE	N.T.S.	
DATE	JUNE, 1999	

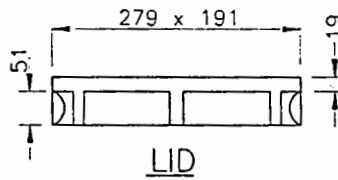


DISTRICT OF HOPE

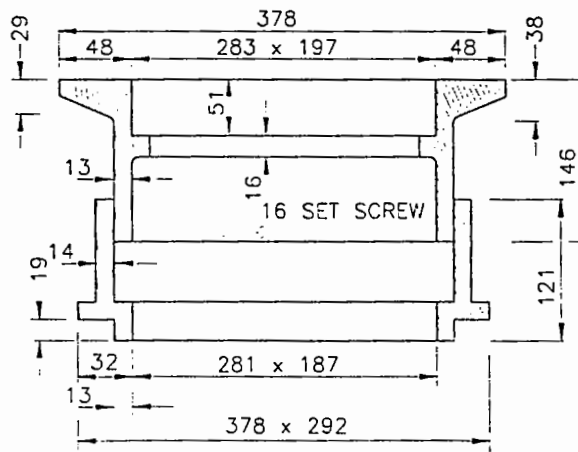
TITLE
ACCESS GATE DETAIL (DOUBLE LOCK)
SDG-12b



PLAN VIEW



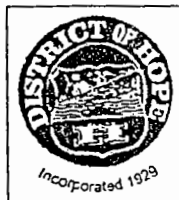
LID



BOX

20-0114 11/01/99 To: District of Hope, 10000 Highway 100, Hope, BC V1V 0R0 DWG: V1V-VR0X-DWG PLOT: 1-1

NO.	REVISION	APPROVED
SCALE:	N.T.S.	
DATE:	JUNE, 1999	



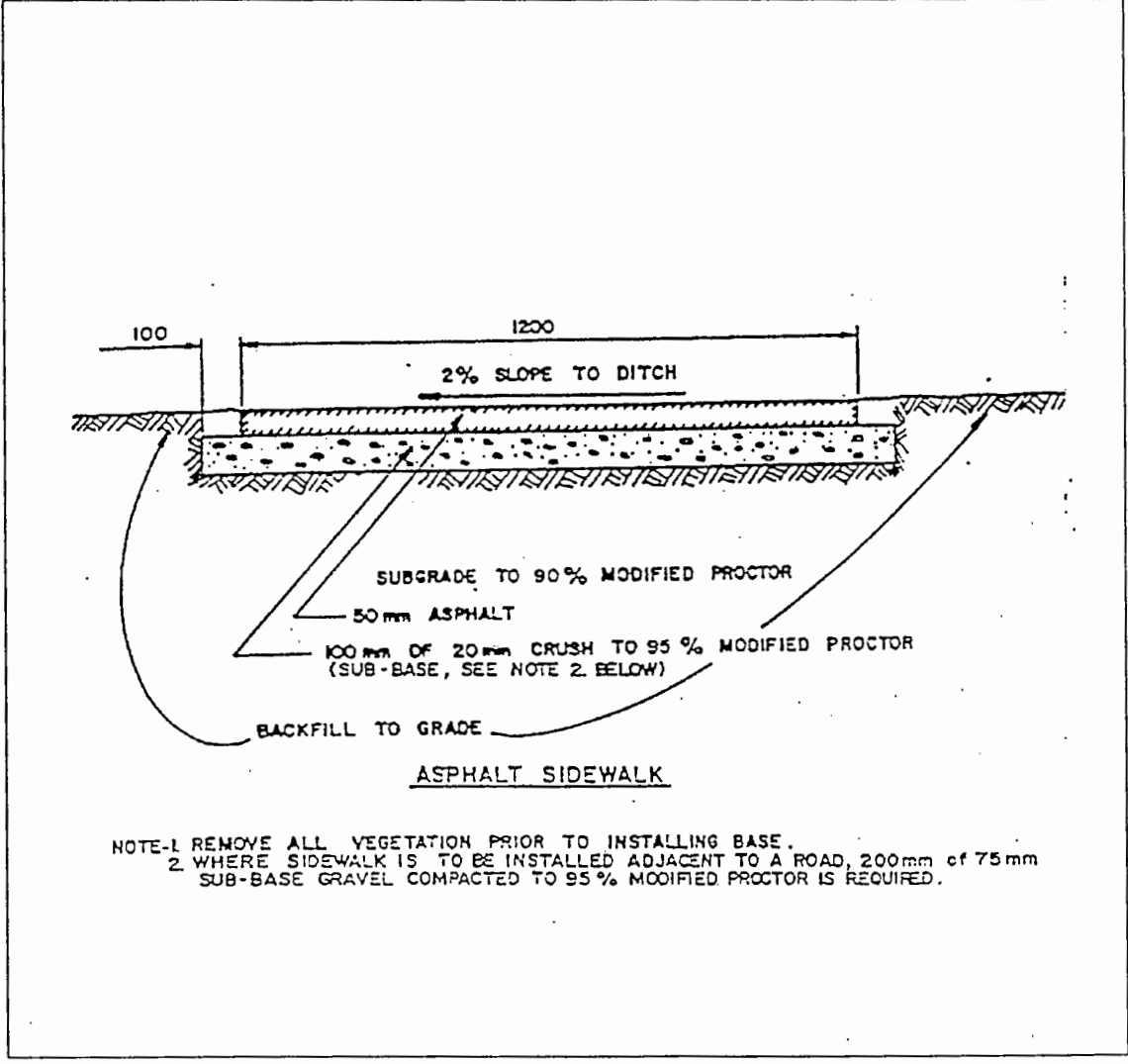
**DISTRICT
OF
HOPE**

TITLE

**SURVEY MONUMENT BOX
RATING H-20**

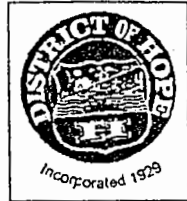
SDG-15

11/20/99
 DISTRICT OF HOPE
 ROAD AND SIDEWALKS
 SIDEWALK-ASPHALT
 100
 1200
 2% SLOPE TO DITCH
 SUBGRADE TO 90% MODIFIED PROCTOR
 50 mm ASPHALT
 100 mm OF 20 mm CRUSH TO 95% MODIFIED PROCTOR
 (SUB-BASE, SEE NOTE 2. BELOW)
 BACKFILL TO GRADE
 ASPHALT SIDEWALK
 NOTE-1 REMOVE ALL VEGETATION PRIOR TO INSTALLING BASE.
 2 WHERE SIDEWALK IS TO BE INSTALLED ADJACENT TO A ROAD, 200mm of 75 mm
 SUB-BASE GRAVEL COMPACTED TO 95% MODIFIED PROCTOR IS REQUIRED.



NOTE-1 REMOVE ALL VEGETATION PRIOR TO INSTALLING BASE.
 2 WHERE SIDEWALK IS TO BE INSTALLED ADJACENT TO A ROAD, 200mm of 75 mm
 SUB-BASE GRAVEL COMPACTED TO 95% MODIFIED PROCTOR IS REQUIRED.

NO.	REVISED	APPROVED
SCALE:	N.T.S.	
DATE:	JUNE, 1999	



**DISTRICT
 OF
 HOPE**

TITLE	ASPHALT SIDEWALK (RURAL)
	SDG-16

