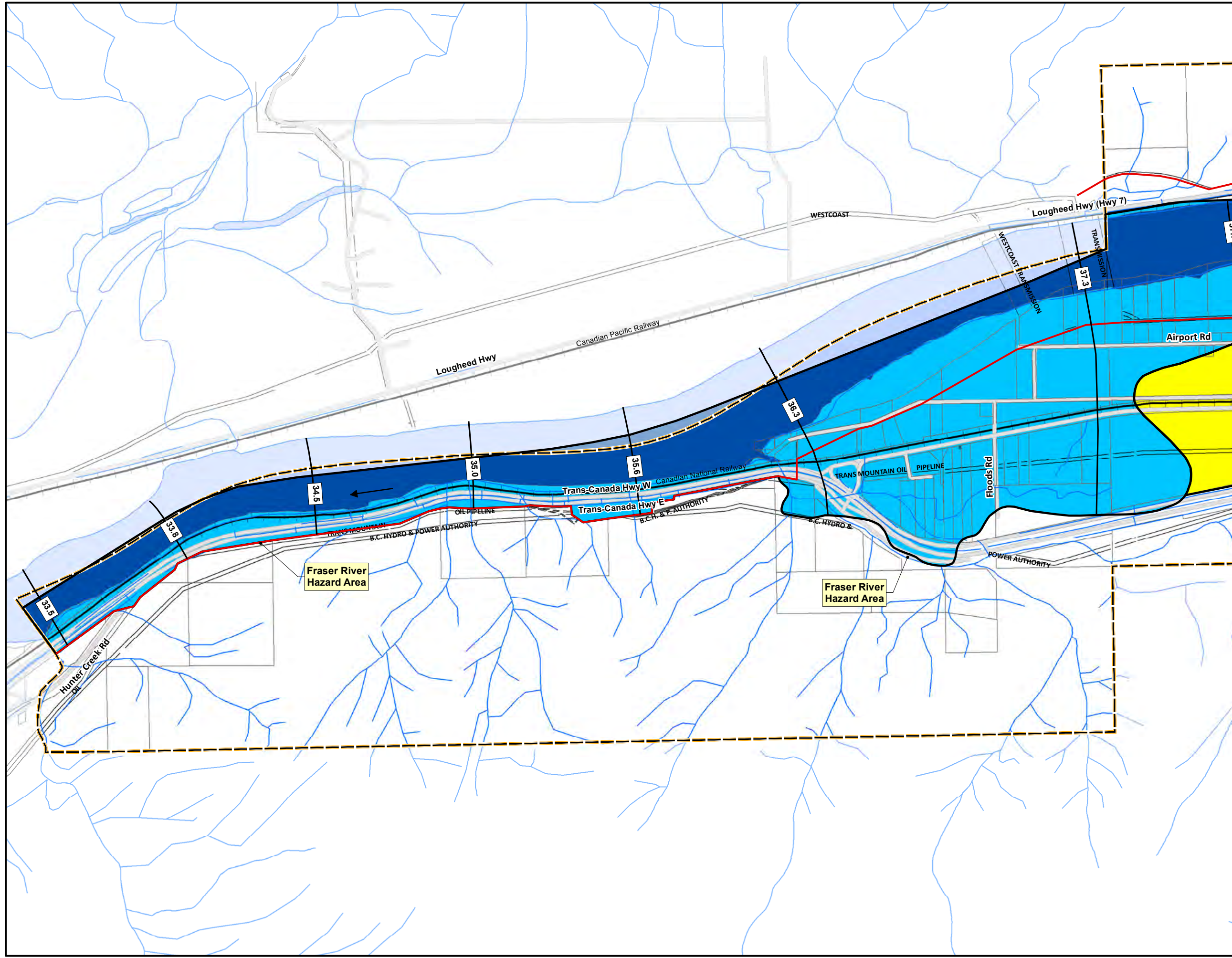
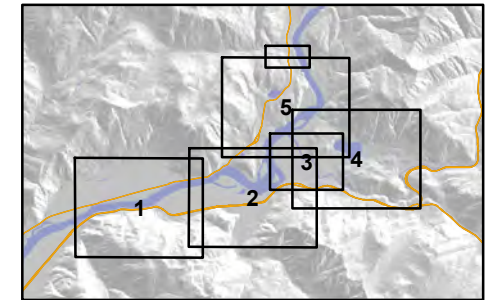


District of Hope Floodplain and Erosion Areas

Map 1

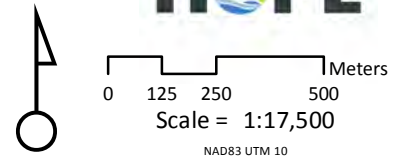


- Streams
- Lakes/Rivers
- District of Hope
- Parcel Boundaries
- Flood and Erosion Hazard Areas**
- Floodway
- Floodplain (Moderate-High Flood Hazard)
- Low Flood Hazard
- Surface Flow
- Flood Construction Level
FCL Isoline
Flood Construction Level (FCL)
- Fraser/Coquihalla/Silverhope Flood Setback Line

Hillshade imagery and Freshwater Atlas information is from openmaps.gov.bc.ca and geobc.gov.bc.ca/base-mapping/atlas/fwa/

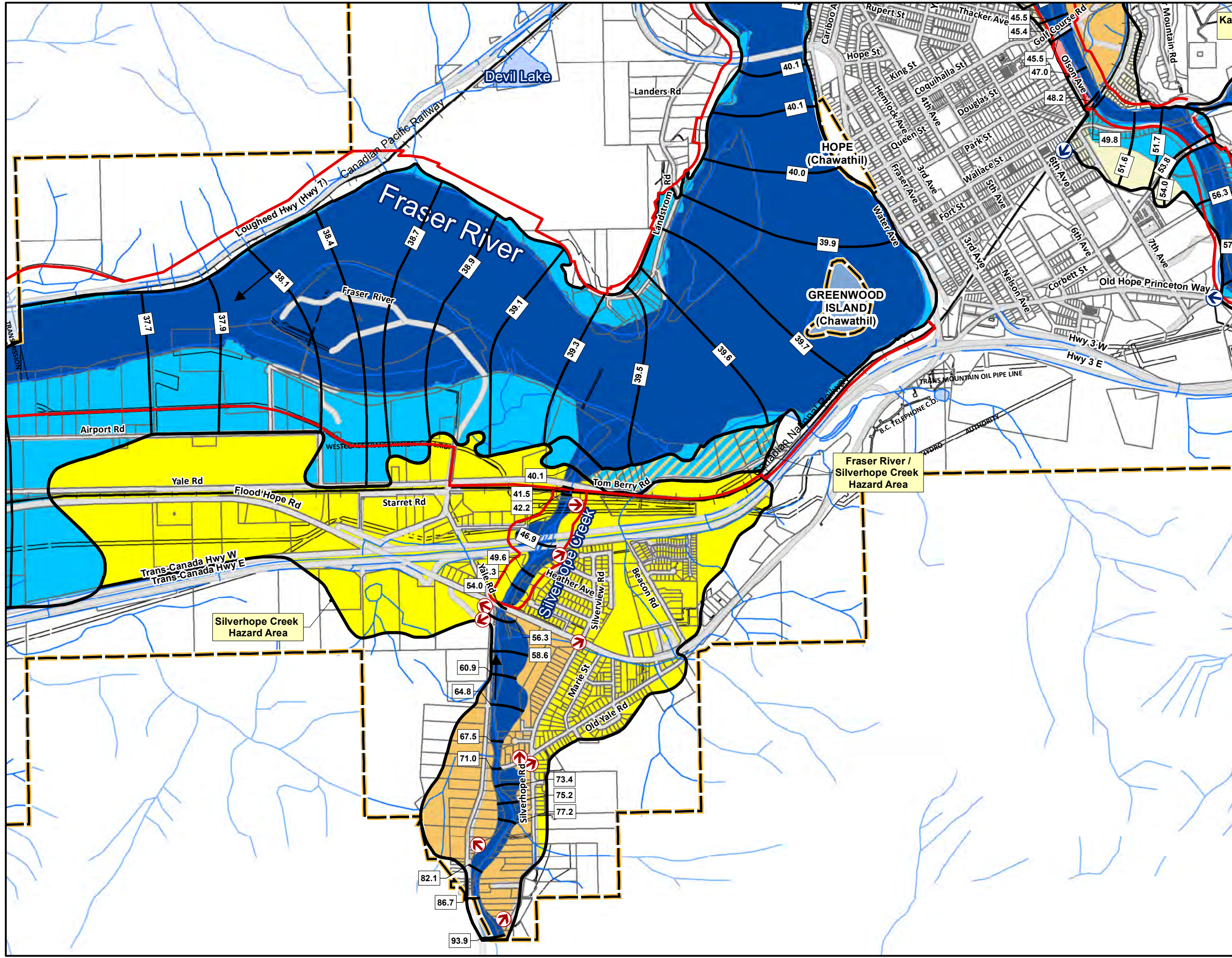
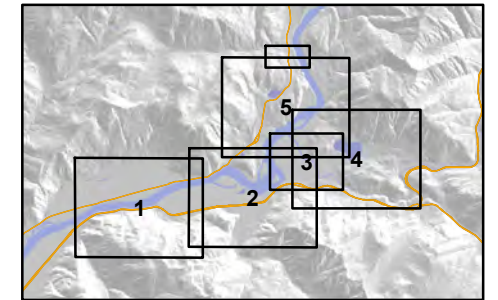
Additional fish stream information is from the Community Mapping Network and Fraser Valley Regional District (2012): cmnbc.ca/atlas_gallery/fraser-valley-regional-district-habitat

Disclaimer: The data provided has been compiled from various sources and may not be complete or accurate. The District of Hope is not responsible for any errors, omissions, or deficiencies in the data.



District of Hope Floodplain and Erosion Areas

Map 2



- Streams
 - Lakes/Rivers
 - District of Hope
 - Parcel Boundaries
- Flood and Erosion Hazard Areas**
- Floodway
 - Floodplain (Moderate-High Flood Hazard)
 - Low Flood Hazard
 - Surface Flow
 - Avulsion Hazard
 - Erosion Hazard
 - Avulsion Hazard and Floodplain
- Avulsion Point
 - Break-through Point
- Flood Construction Level
 FCL Isoline
 Flood Construction Level (FCL)
- Fraser/Coquihalla/Silverhope Flood Setback Line

Hillshade imagery and Freshwater Atlas information is from openmaps.gov.bc.ca and geobc.gov.bc.ca/base-mapping/atlas/fwa/

Additional fish stream information is from the Community Mapping Network and Fraser Valley Regional District (2012): cmnbc.ca/atlas_gallery/fraser-valley-regional-district-habitat

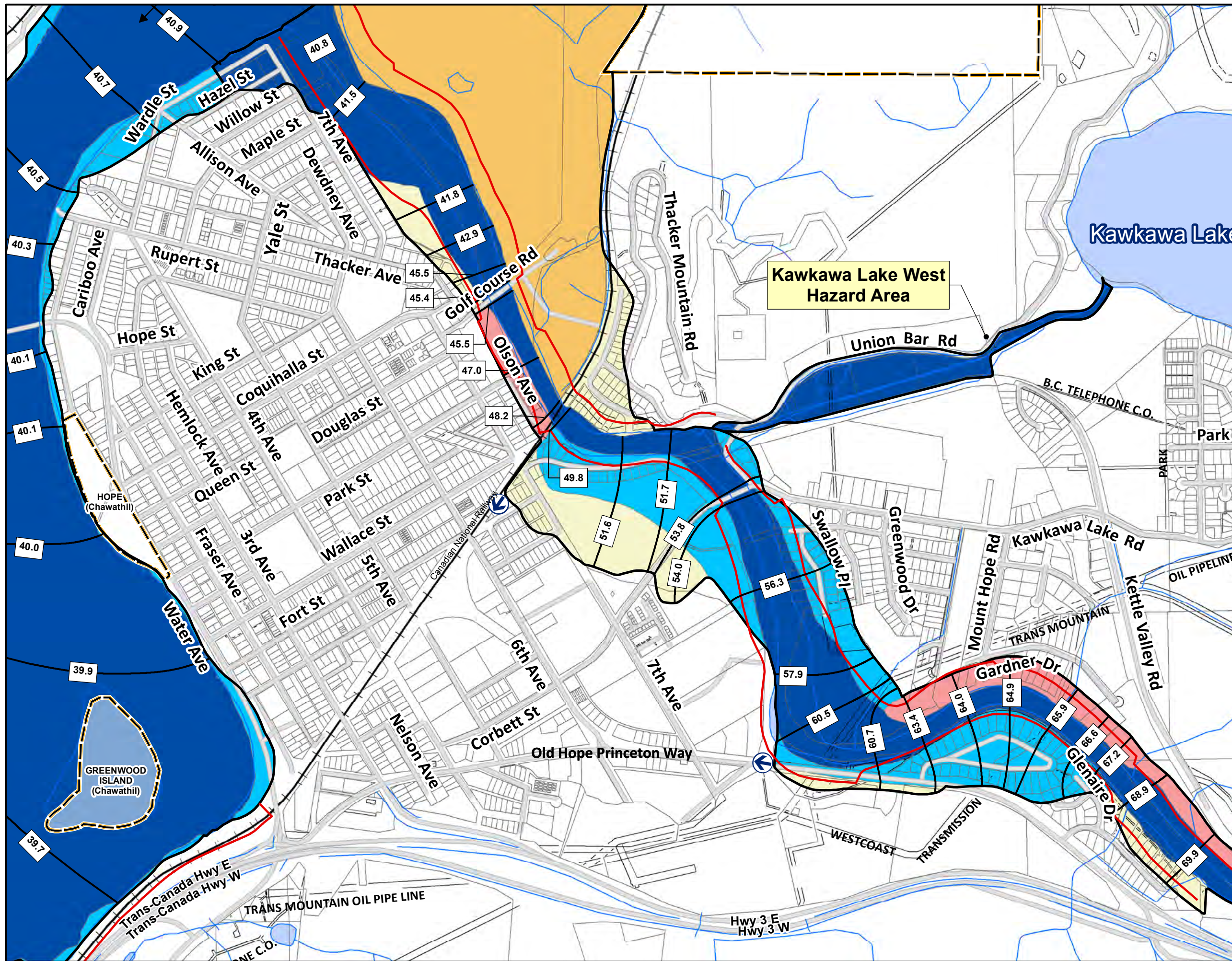
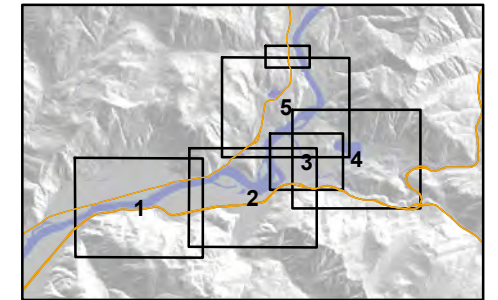
Disclaimer: The data provided has been compiled from various sources and may not be complete or accurate. The District of Hope is not responsible for any errors, omissions, or deficiencies in the data.

DISTRICT OF HOPE

0 125 250 500 Meters
Scale = 1:17,500
NAD83 UTM 10

District of Hope Floodplain and Erosion Areas

Map 3



- Streams
- Lakes/Rivers
- District of Hope
- Parcel Boundaries
- Flood and Erosion Hazard Areas**
- Floodway
- Floodplain (Moderate-High Flood Hazard)
- Low Flood Hazard
- Avulsion Hazard
- Erosion Hazard
- Break-through Point
- Flood Construction Level
- FCL Isoline
- Flood Construction Level (FCL)
- Fraser/Coquihalla/Silverhope Flood Setback Line

Hillshade imagery and Freshwater Atlas information is from openmaps.gov.bc.ca and geobc.gov.bc.ca/base-mapping/atlas/fwa/

Additional fish stream information is from the Community Mapping Network and Fraser Valley Regional District (2012): cmnbc.ca/atlas_gallery/fraser-valley-regional-district-habitat

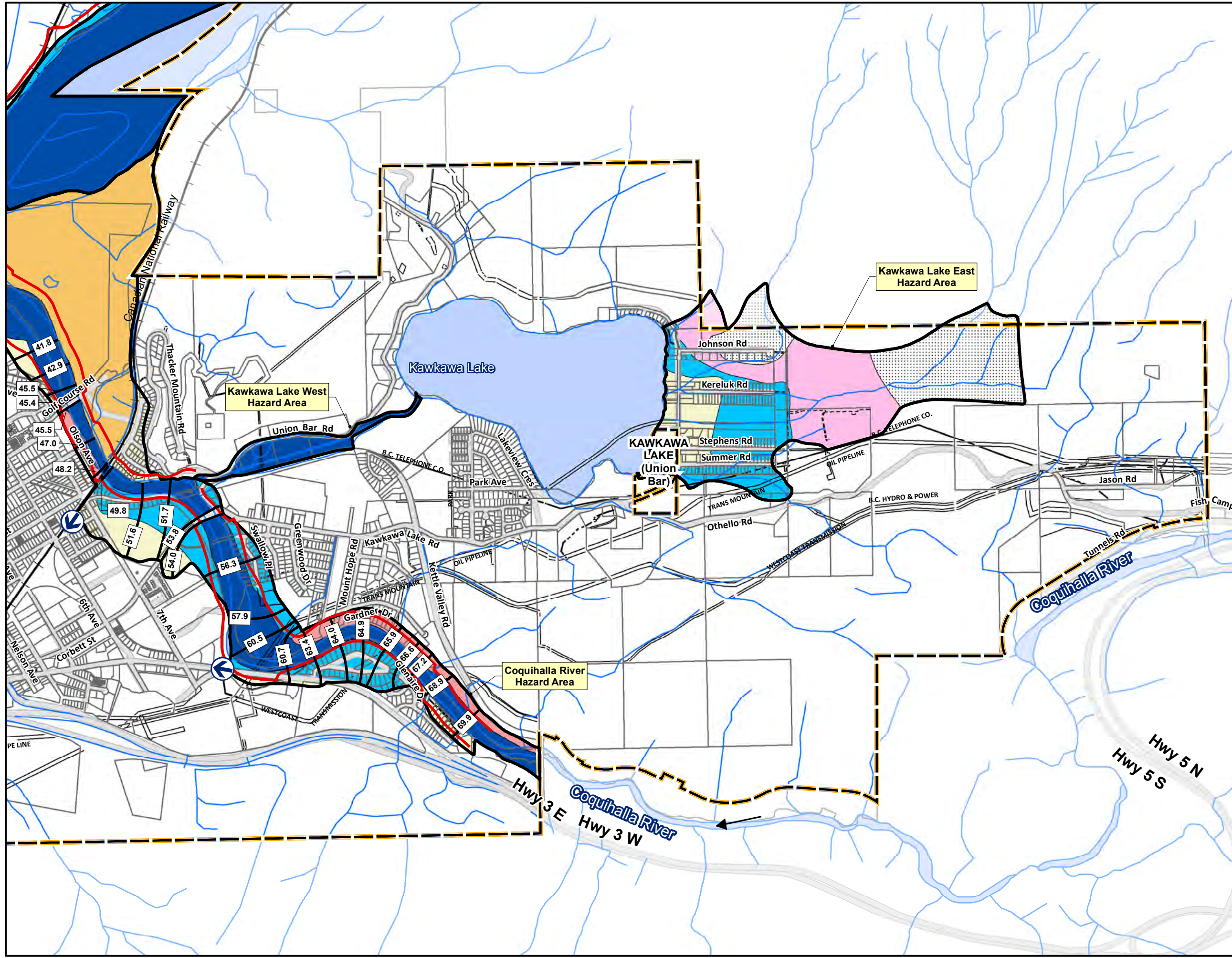
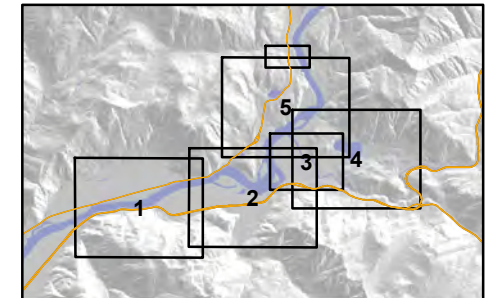
Disclaimer: The data provided has been compiled from various sources and may not be complete or accurate. The District of Hope is not responsible for any errors, omissions, or deficiencies in the data.

DISTRICT OF HOPE

Scale = 1:10,000
NAD83 UTM 10

District of Hope Floodplain and Erosion Areas

Map 4

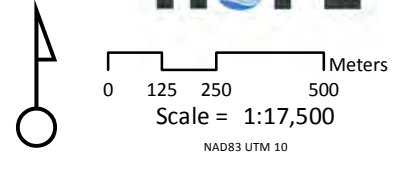


- Streams
- Lakes/Rivers
- District of Hope
- Parcel Boundaries
- Flood and Erosion Hazard Areas**
- Floodway
- High to Severe Flood Hazard
- Floodplain (Moderate-High Flood Hazard)
- Low Flood Hazard
- Avulsion Hazard
- Erosion Hazard
- Debris Flow Hazard
- Break-through Point
- Flood Construction Level
FCL Isoline
Flood Construction Level (FCL)
- Fraser/Coquihalla/Silverhope Flood Setback Line

Hillshade imagery and Freshwater Atlas information is from openmaps.gov.bc.ca and geobc.gov.bc.ca/base-mapping/atlas/fwa/

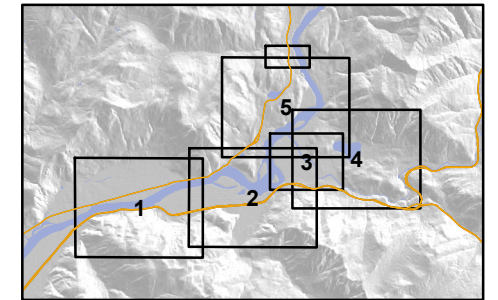
Additional fish stream information is from the Community Mapping Network and Fraser Valley Regional District (2012): cmnbc.ca/atlas_gallery/fraser-valley-regional-district-habitat

Disclaimer: The data provided has been compiled from various sources and may not be complete or accurate. The District of Hope is not responsible for any errors, omissions, or deficiencies in the data.

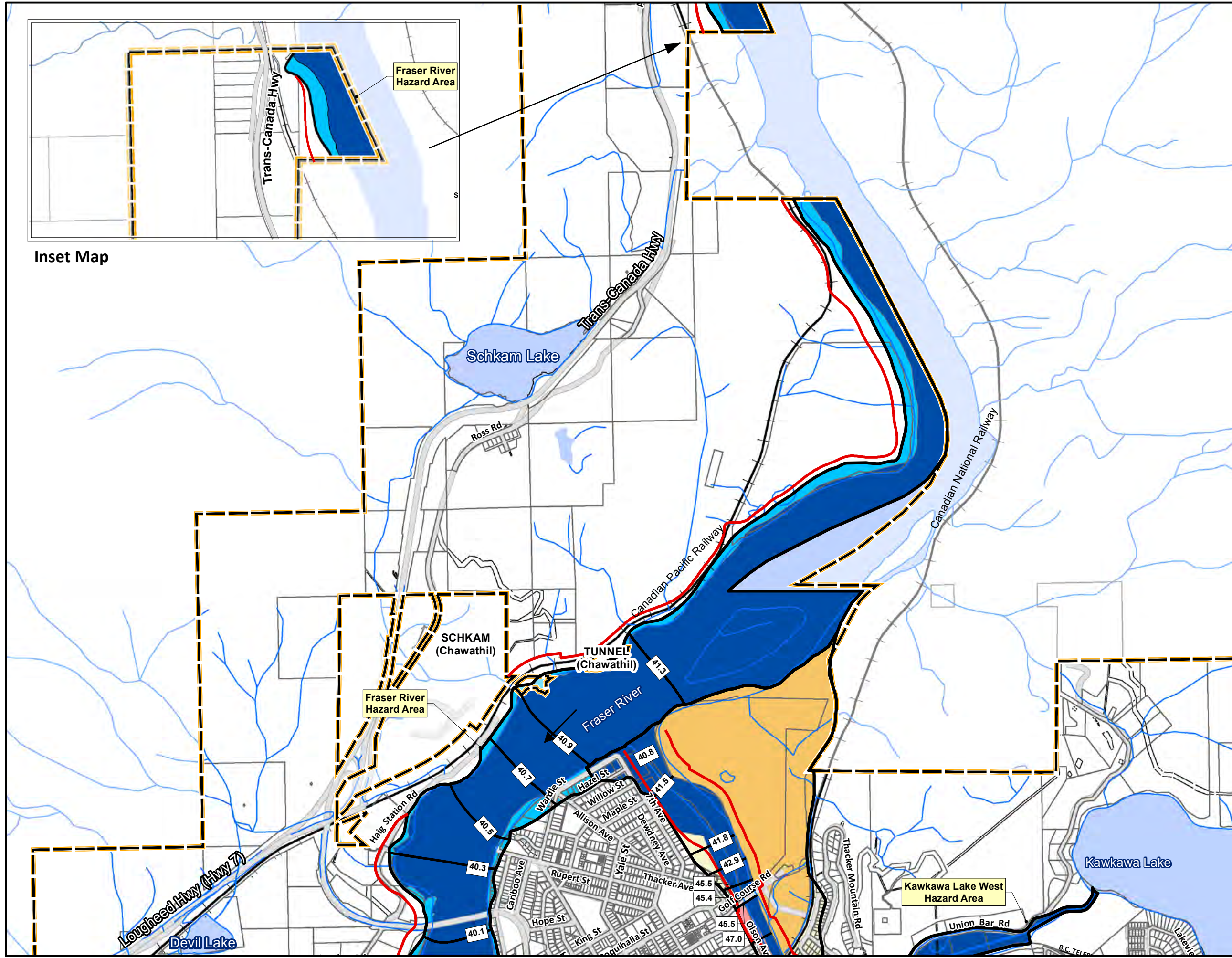


District of Hope Floodplain and Erosion Areas

Map 5



Inset Map



- Streams
- Lakes/Rivers
- District of Hope
- Parcel Boundaries
- Flood and Erosion Hazard Areas**
- Floodway
- Floodplain (Moderate-High Flood Hazard)
- Low Flood Hazard
- Avulsion Hazard
- Erosion Hazard
- Flood Construction Level
- FCL Isoline
- Flood Construction Level (FCL)
- Fraser/Coquihalla/Silverhope Flood Setback Line

Hillshade imagery and Freshwater Atlas information is from openmaps.gov.bc.ca and geobc.gov.bc.ca/base-mapping/atlas/fwa/

Additional fish stream information is from the Community Mapping Network and Fraser Valley Regional District (2012): cmnbc.ca/atlas_gallery/fraser-valley-regional-district-habitat

Disclaimer: The data provided has been compiled from various sources and may not be complete or accurate. The District of Hope is not responsible for any errors, omissions, or deficiencies in the data.

DISTRICT OF HOPE

Scale = 1:17,500
NAD83 UTM 10