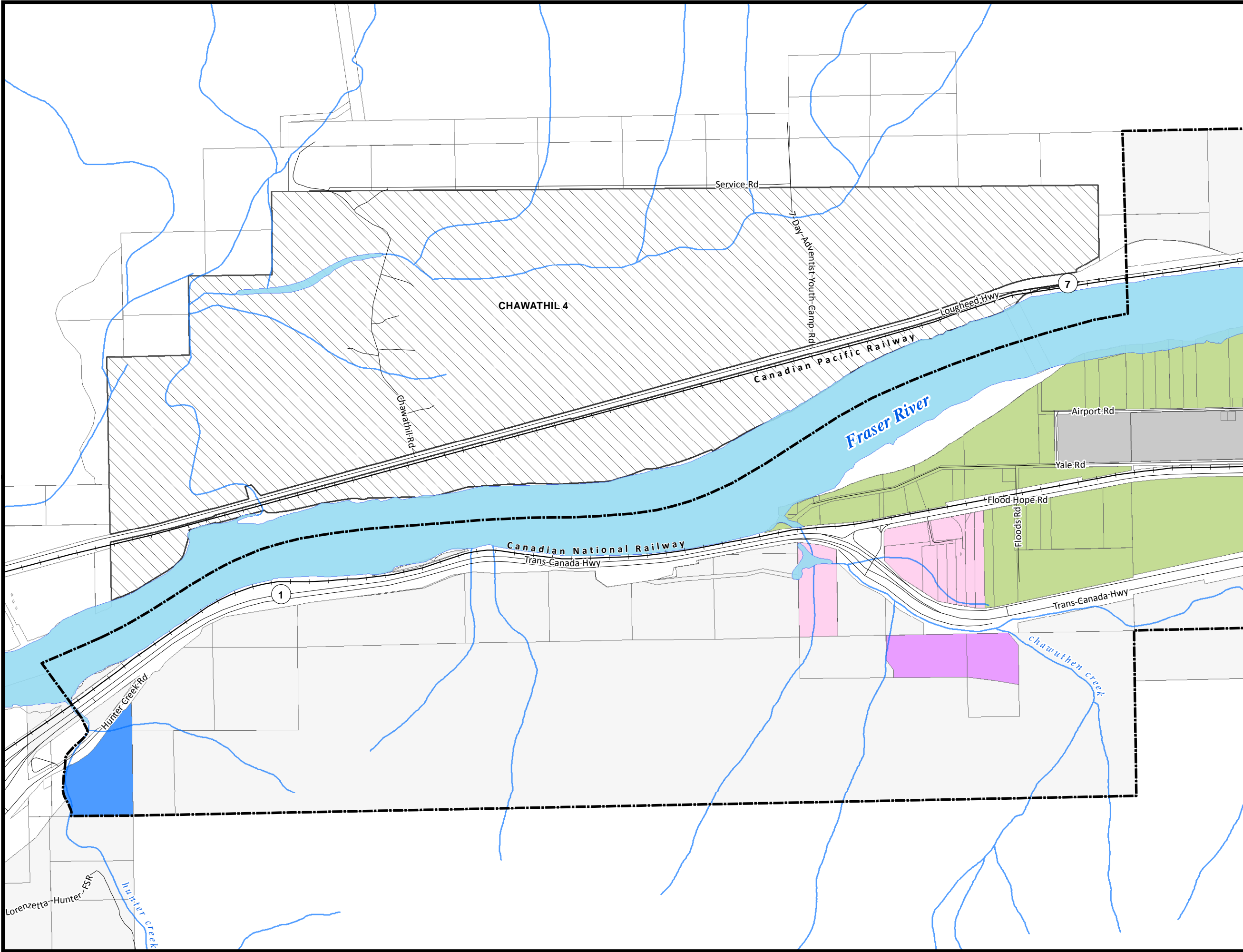
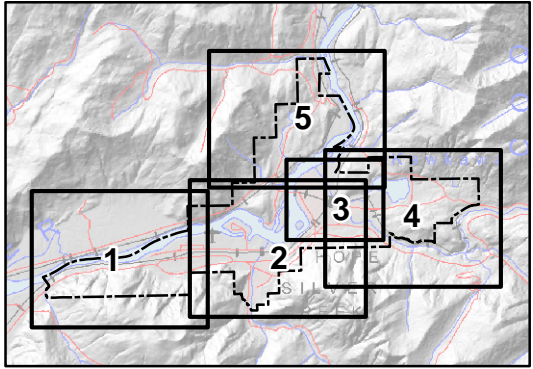


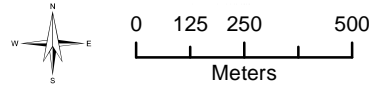
# District of Hope Official Community Plan Bylaw 1378, 2016

Map 1



- Creek/Stream
- Major Waterbody
- Road
- Railway
- Land Parcel
- First Nation Reserves
- Limited Use
- Country Residential
- Urban/Suburban Residential
- Downtown Hope
- Comprehensive Development
- Highway Commercial
- Light Service Industry
- Heavy Industry
- Parks, Recreation and Open Space
- Rural/Agricultural
- Airport

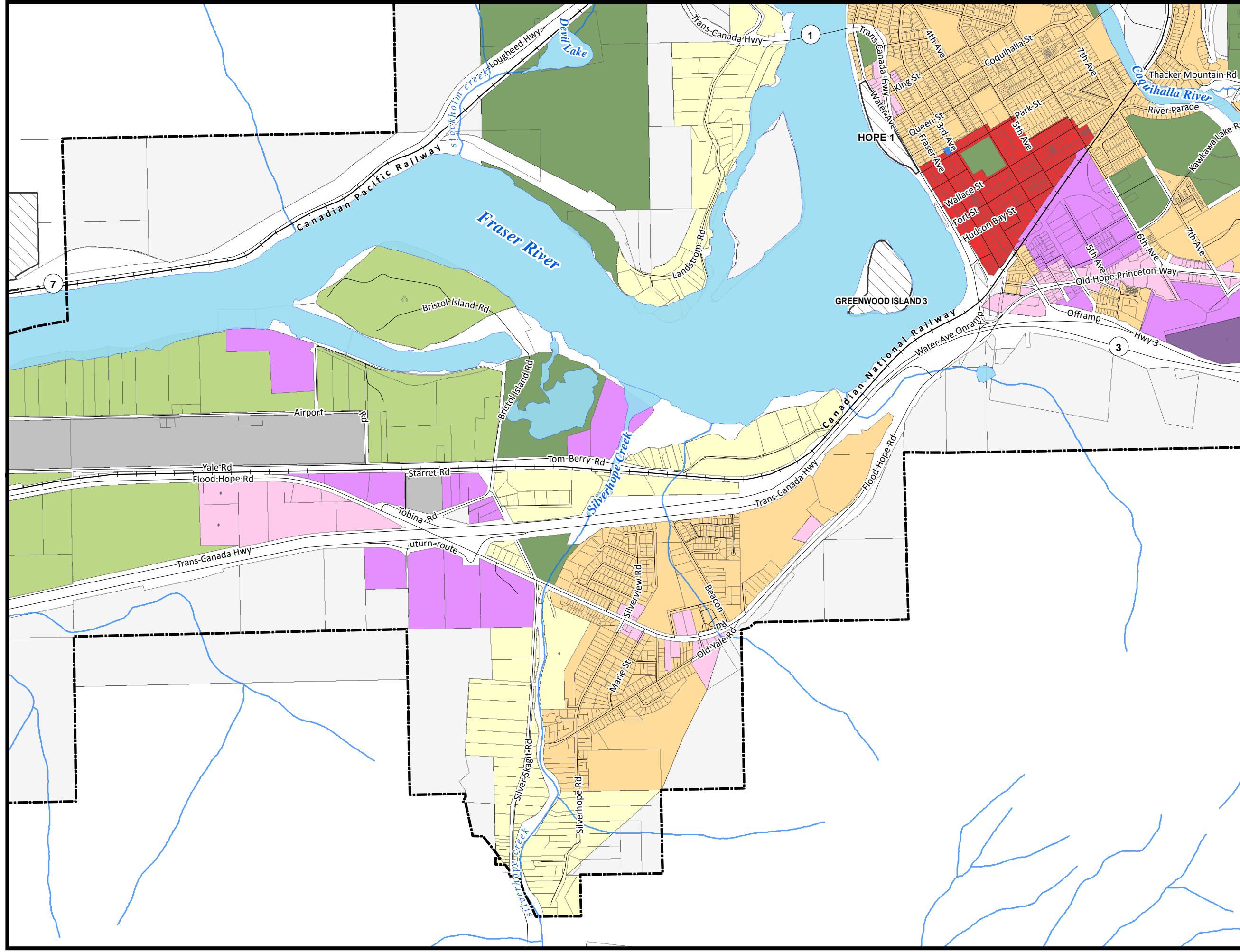
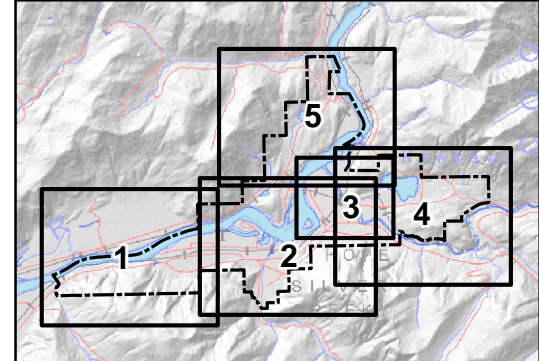
Disclaimer: This map was compiled from various data sources and may not be complete or accurate. The District of Hope is not responsible for any errors, omissions or deficiencies in the data.  
Map not intended for navigation.  
Map produced: November 2018



UTM - Zone 10N NAD83 1:17,500

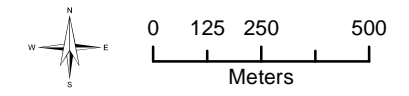
# District of Hope Official Community Plan Bylaw 1378, 2016

Map 2



- Creek/Stream
- Major Waterbody
- Road
- Railway
- Land Parcel
- First Nation Reserves
- Limited Use
- Country Residential
- Urban/Suburban Residential
- Downtown Hope
- Comprehensive Development
- Highway Commercial
- Light Service Industry
- Heavy Industry
- Parks, Recreation and Open Space
- Rural/Agricultural
- Airport

Disclaimer: This map was compiled from various data sources and may not be complete or accurate. The District of Hope is not responsible for any errors, omissions or deficiencies in the data.  
Map not intended for navigation.  
Map produced: November 2018

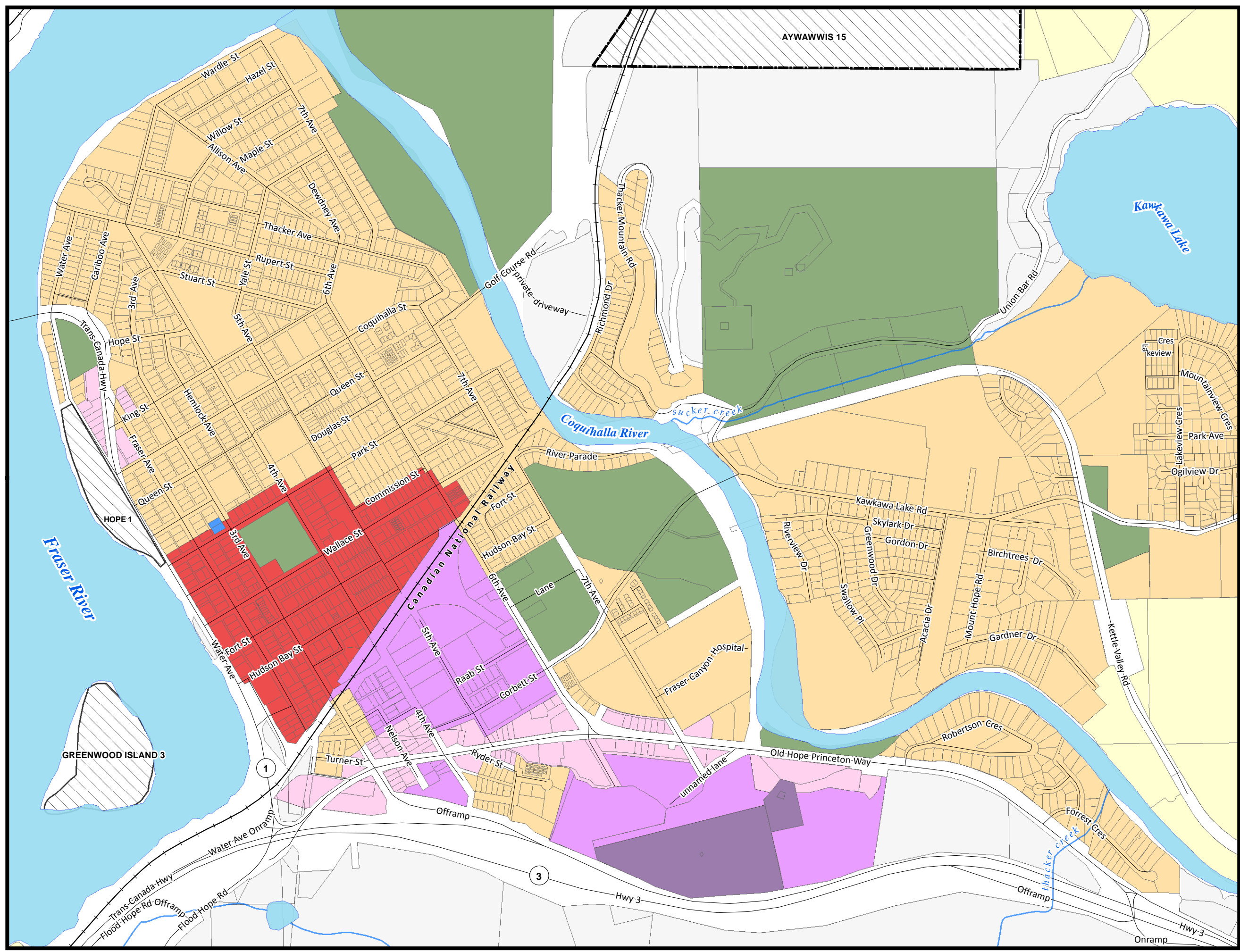
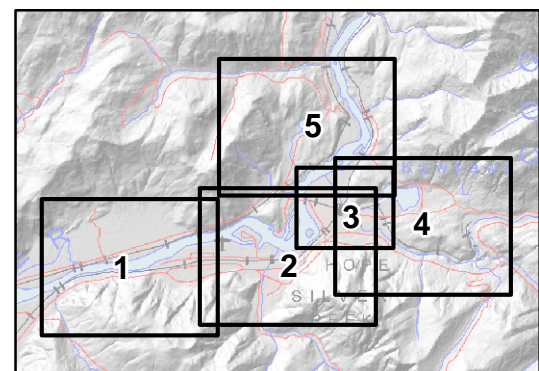


UTM - Zone 10N NAD83  
1:17,500



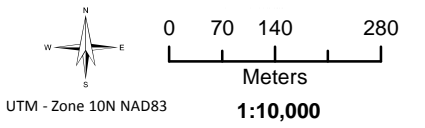
# District of Hope Official Community Plan Bylaw 1378, 2016

Map 3



- Creek/Stream
- Major Waterbody
- Road
- Railway
- Land Parcel
- First Nation Reserves
- Limited Use
- Country Residential
- Urban/Suburban Residential
- Downtown Hope
- Comprehensive Development
- Highway Commercial
- Light Service Industry
- Heavy Industry
- Parks, Recreation and Open Space
- Rural/Agricultural
- Airport

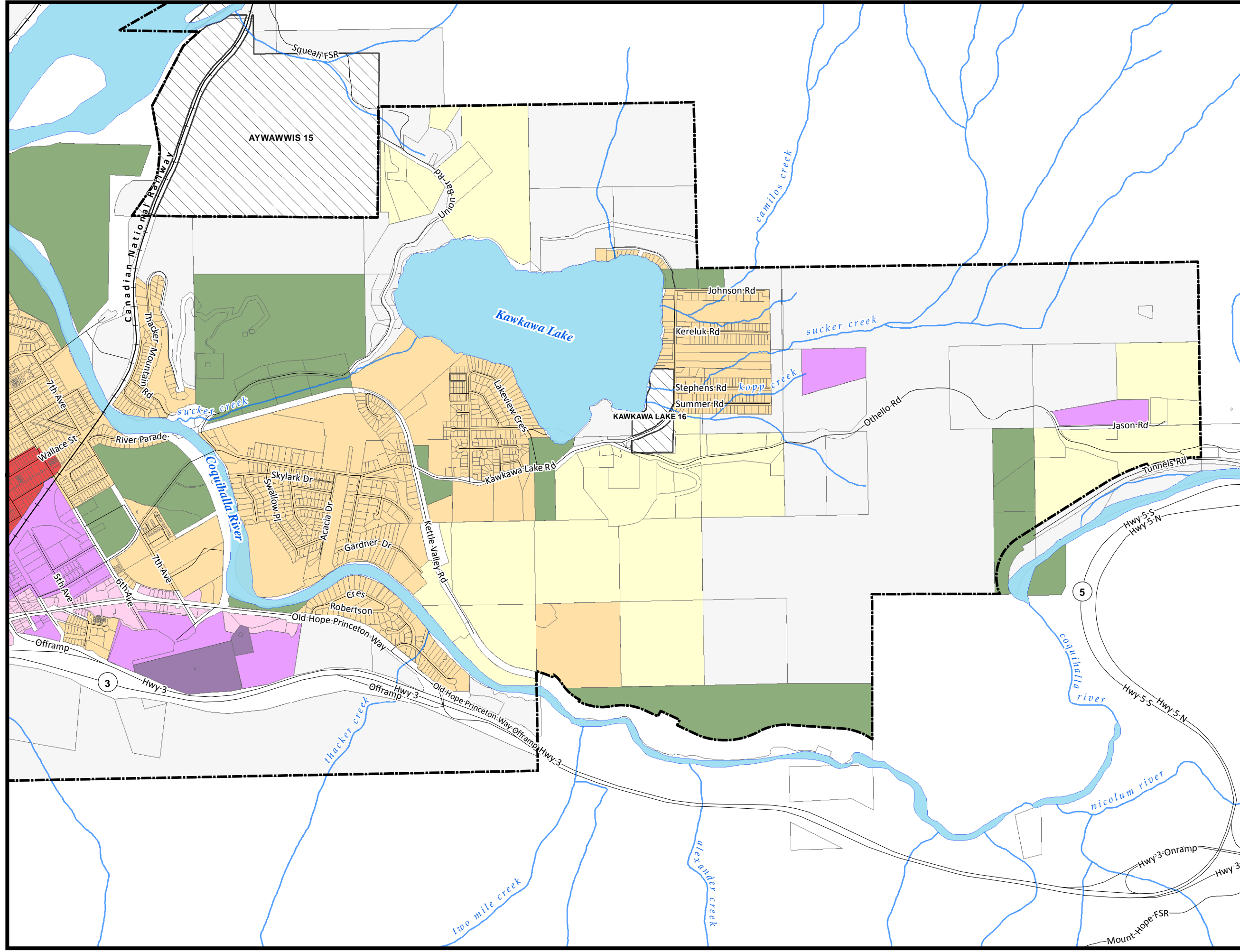
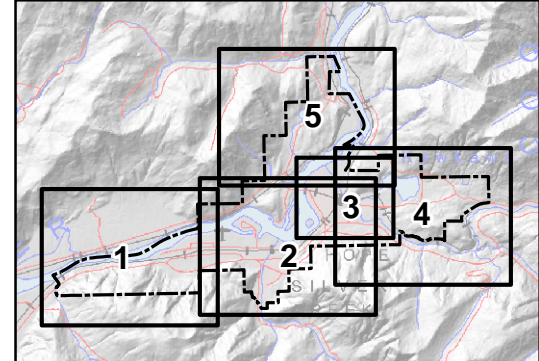
Disclaimer: This map was compiled from various data sources and may not be complete or accurate. The District of Hope is not responsible for any errors, omissions or deficiencies in the data.  
Map not intended for navigation.  
Map produced: November 2018





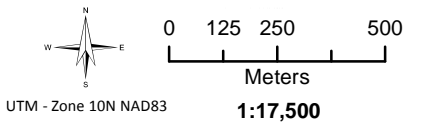
# District of Hope Official Community Plan Bylaw 1378, 2016

Map 4



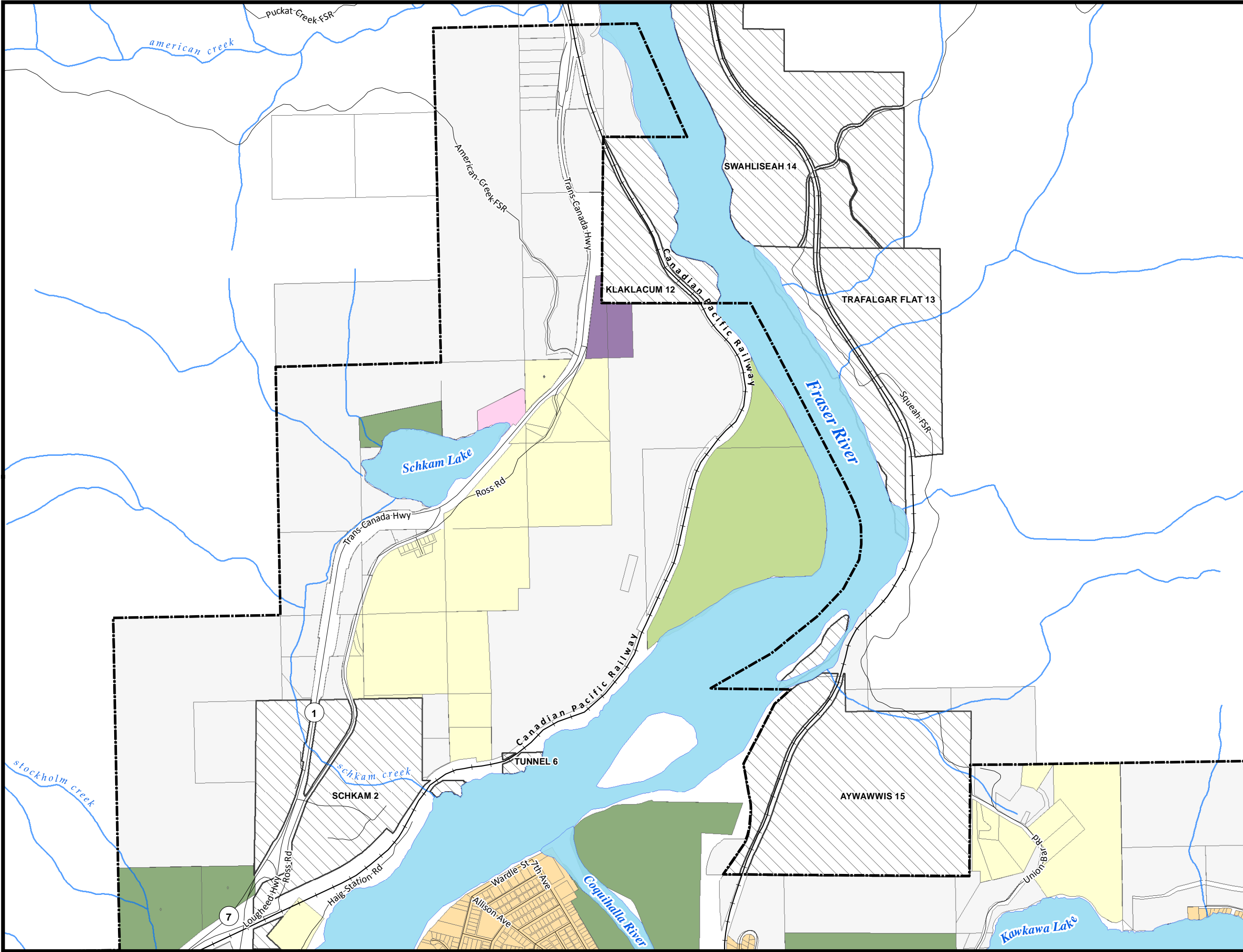
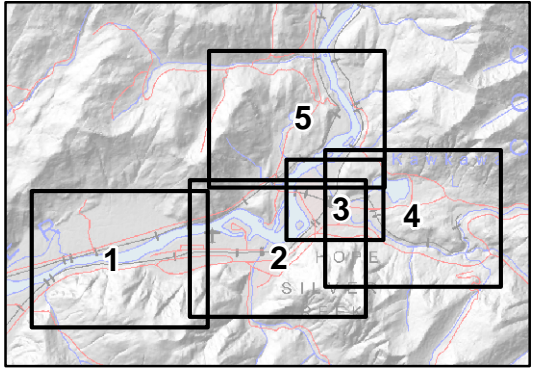
- Creek/Stream
- Major Waterbody
- Road
- Railway
- Land Parcel
- First Nation Reserves
- Limited Use
- Country Residential
- Urban/Suburban Residential
- Downtown Hope
- Comprehensive Development
- Highway Commercial
- Light Service Industry
- Heavy Industry
- Parks, Recreation and Open Space
- Rural/Agricultural
- Airport

Disclaimer: This map was compiled from various data sources and may not be complete or accurate. The District of Hope is not responsible for any errors, omissions or deficiencies in the data.  
Map not intended for navigation.  
Map produced: November 2018



# District of Hope Official Community Plan Bylaw 1378, 2016

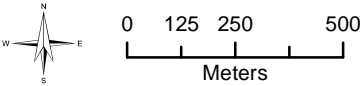
Map 5



- Creek/Stream
- Major Waterbody
- Road
- Railway
- Land Parcel
- First Nation Reserves
- Limited Use
- Country Residential
- Urban/Suburban Residential
- Downtown Hope
- Comprehensive Development
- Highway Commercial
- Light Service Industry
- Heavy Industry
- Parks, Recreation and Open Space
- Rural/Agricultural
- Airport

Disclaimer: This map was compiled from various data sources and may not be complete or accurate. The District of Hope is not responsible for any errors, omissions or deficiencies in the data.  
Map not intended for navigation.  
Map produced: November 2018

DISTRICT OF  
**HOPE**



UTM - Zone 10N NAD83 1:17,500