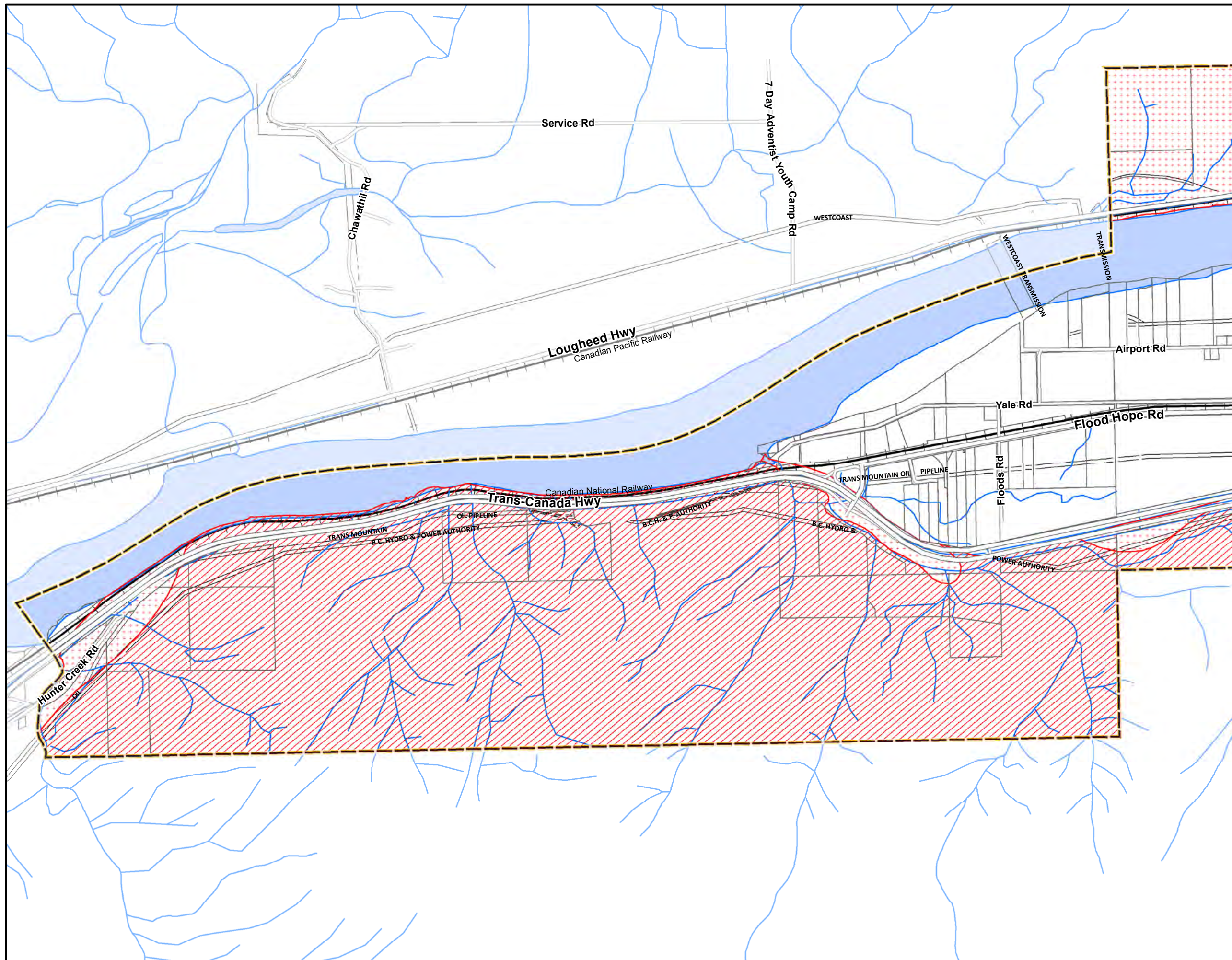
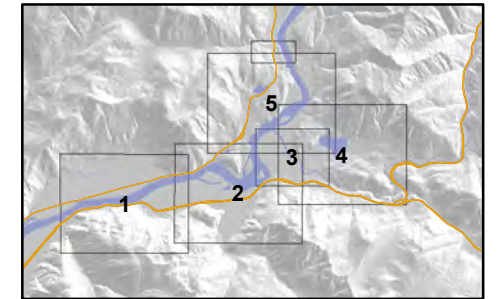


# District of Hope Geotechnical Hazard Areas

Map 1



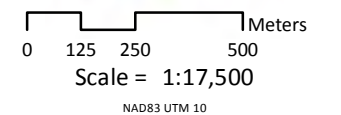
- Streams
- Lakes/Rivers
- District of Hope
- Geotechnical Hazard Areas**
- No Apparent Geotechnical Hazard
- Uncertain Geotechnical Hazard
- High Geotechnical Hazard
- Rock Slide Limit Line

Prepared by Modus Planning, Design  
& Engagement Inc.

Hillshade imagery and Freshwater Atlas information is from  
[openmaps.gov.bc.ca](http://openmaps.gov.bc.ca) and [geobc.gov.bc.ca/base-mapping/atlas/fwa/](http://geobc.gov.bc.ca/base-mapping/atlas/fwa/)

Additional fish stream information is from the Comunity  
Mapping Network and Fraser Valley Regional District (2012):  
[cmnbc.ca/atlas\\_gallery/fraser-valley-regional-district-habitat](http://cmnbc.ca/atlas_gallery/fraser-valley-regional-district-habitat)

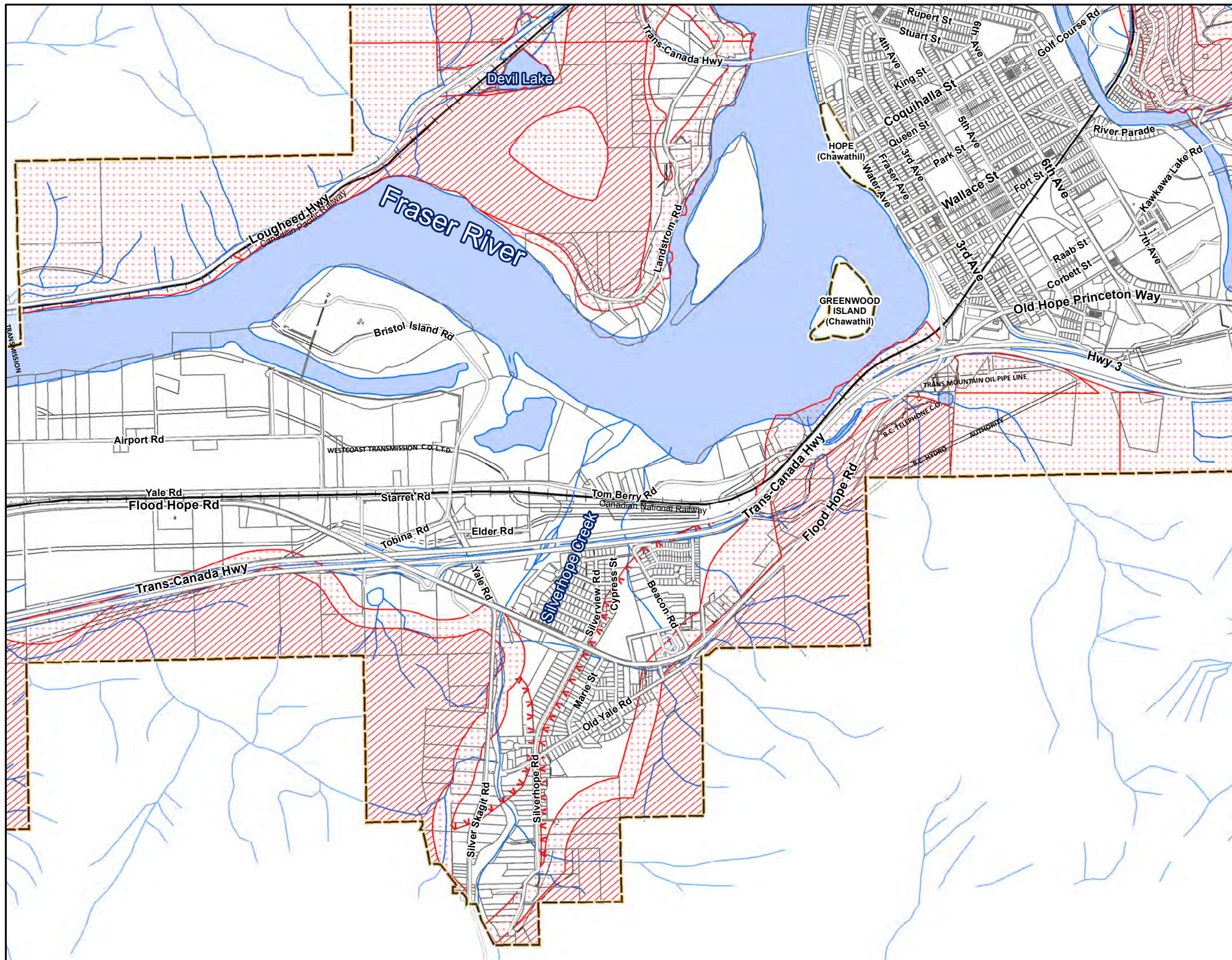
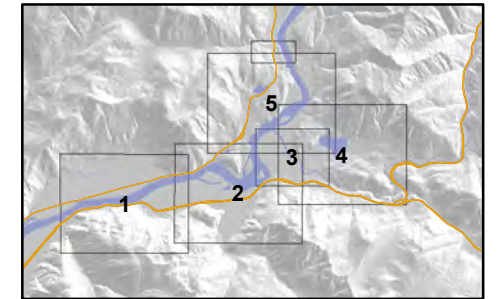
Disclaimer: The data provided has been compiled from various  
sources and may not be complete or accurate. The District of Hope is  
not responsible for any errors, omissions, or deficiencies in the data.





# District of Hope Geotechnical Hazard Areas

Map 2



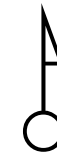
- Streams
- Lakes/Rivers
- District of Hope
- Geotechnical Hazard Areas**
- No Apparent Geotechnical Hazard
- Uncertain Geotechnical Hazard
- High Geotechnical Hazard
- Rock Slide Limit Line

Prepared by Modus Planning, Design & Engagement Inc.

Hillshade imagery and Freshwater Atlas information is from [openmaps.gov.bc.ca](http://openmaps.gov.bc.ca) and [geobc.gov.bc.ca/base-mapping/atlas/fwa/](http://geobc.gov.bc.ca/base-mapping/atlas/fwa/)

Additional fish stream information is from the Community Mapping Network and Fraser Valley Regional District (2012): [cmnbc.ca/atlas\\_gallery/fraser-valley-regional-district-habitat](http://cmnbc.ca/atlas_gallery/fraser-valley-regional-district-habitat)

Disclaimer: The data provided has been compiled from various sources and may not be complete or accurate. The District of Hope is not responsible for any errors, omissions, or deficiencies in the data.



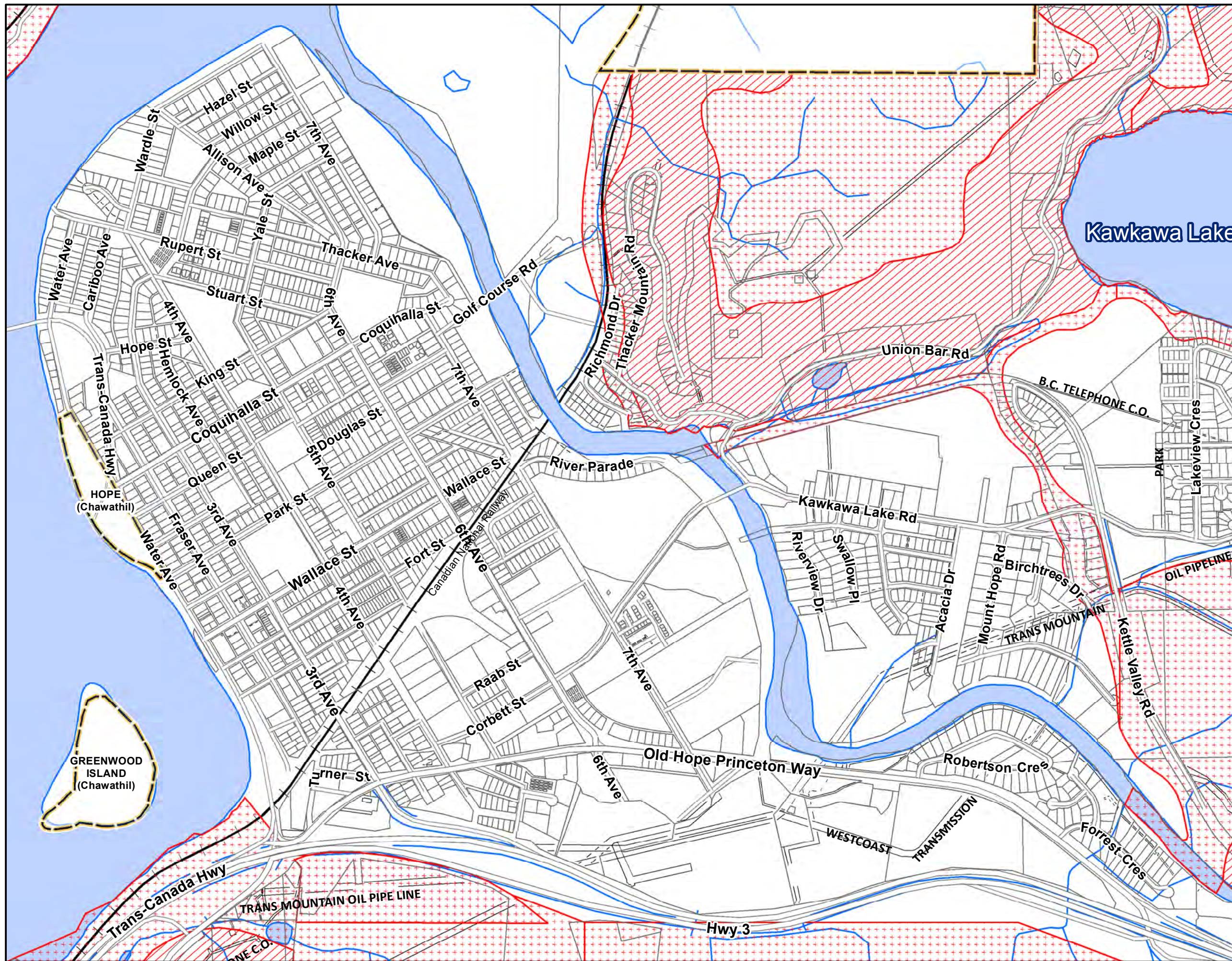
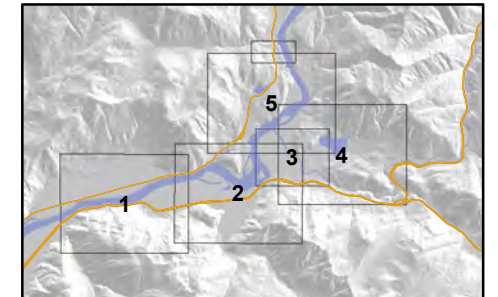
0 125 250 500 Meters  
Scale = 1:17,500

NAD83 UTM 10



# District of Hope Geotechnical Hazard Areas

Map 3



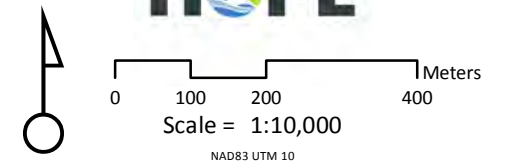
- Streams
- Lakes/Rivers
- District of Hope
- Geotechnical Hazard Areas**
- No Apparent Geotechnical
- Uncertain Geotechnical Hazard
- High Geotechnical Hazard
- Rock Slide Limit Line

Prepared by Modus Planning, Design & Engagement Inc.

Hillshade imagery and Freshwater Atlas information is from [openmaps.gov.bc.ca](http://openmaps.gov.bc.ca) and [geobc.gov.bc.ca/base-mapping/atlas/fwa/](http://geobc.gov.bc.ca/base-mapping/atlas/fwa/)

Additional fish stream information is from the Community Mapping Network and Fraser Valley Regional District (2012): [cmnbc.ca/atlas\\_gallery/fraser-valley-regional-district-habitat](http://cmnbc.ca/atlas_gallery/fraser-valley-regional-district-habitat)

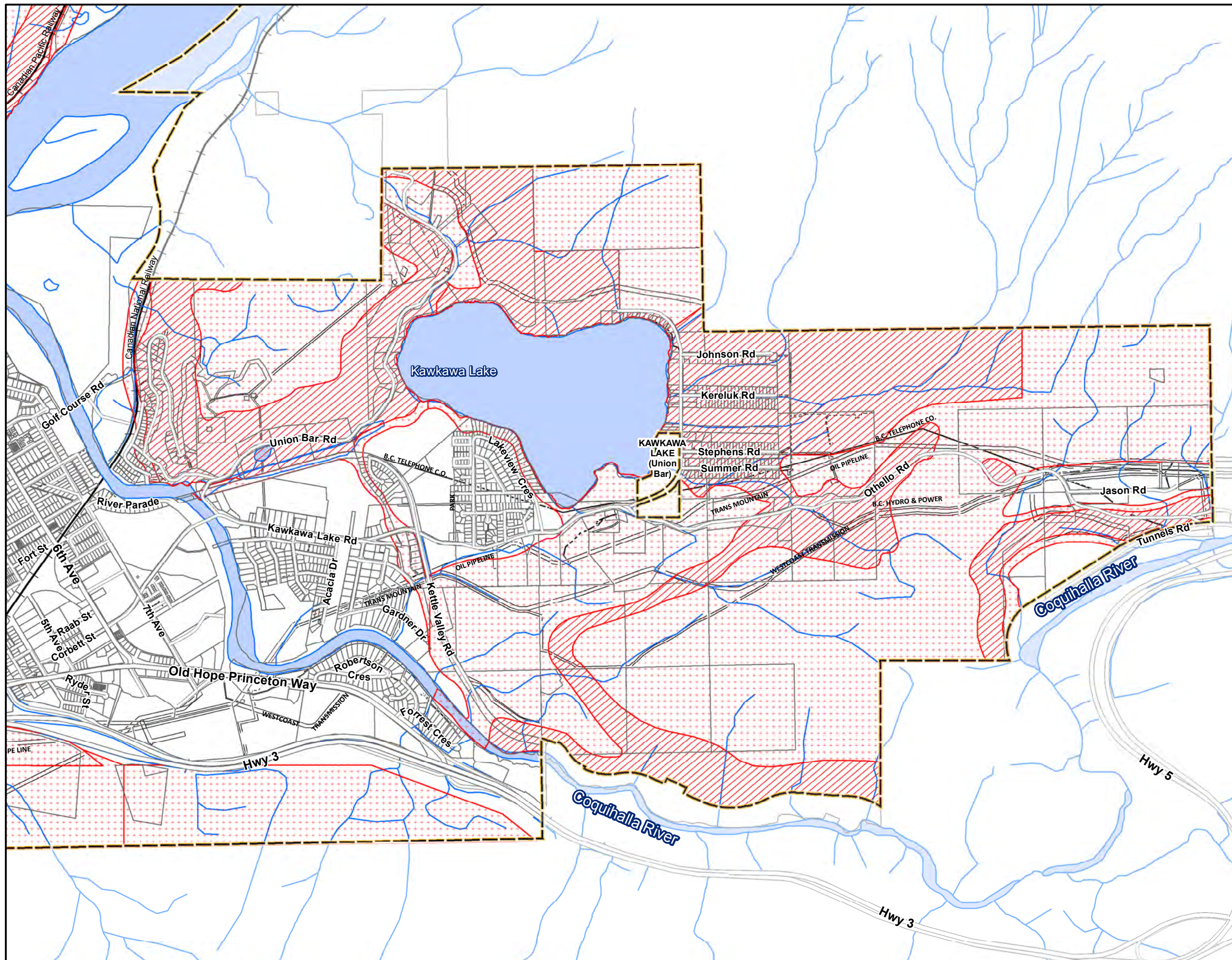
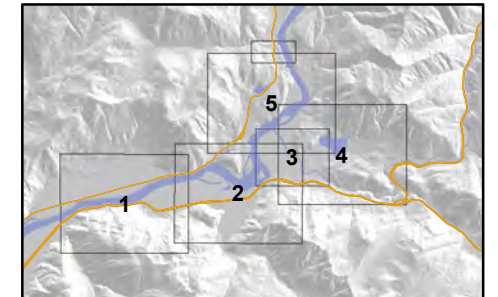
Disclaimer: The data provided has been compiled from various sources and may not be complete or accurate. The District of Hope is not responsible for any errors, omissions, or deficiencies in the data.





# District of Hope Geotechnical Hazard Areas

Map 4



- Streams
- Lakes/Rivers
- District of Hope
- Geotechnical Hazard Areas**
- No Apparent Geotechnical
- Uncertain Geotechnical Hazard
- High Geotechnical Hazard
- Rock Slide Limit Line

Prepared by Modus Planning, Design  
& Engagement Inc.

Hillshade imagery and Freshwater Atlas information is from  
[openmaps.gov.bc.ca](http://openmaps.gov.bc.ca) and [geobc.gov.bc.ca/base-mapping/atlas/fwa/](http://geobc.gov.bc.ca/base-mapping/atlas/fwa/)

Additional fish stream information is from the Comunity  
Mapping Network and Fraser Valley Regional District (2012):  
[cmnbc.ca/atlas\\_gallery/fraser-valley-regional-district-habitat](http://cmnbc.ca/atlas_gallery/fraser-valley-regional-district-habitat)

Disclaimer: The data provided has been compiled from various  
sources and may not be complete or accurate. The District of Hope is  
not responsible for any errors, omissions, or deficiencies in the data.



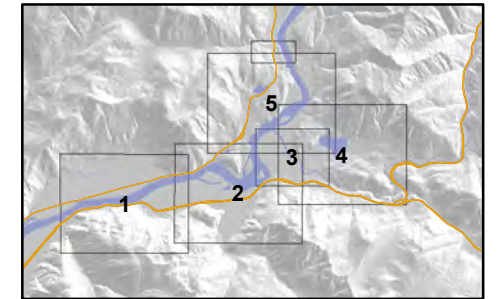
0 125 250 500 Meters  
Scale = 1:17,500

NAD83 UTM 10

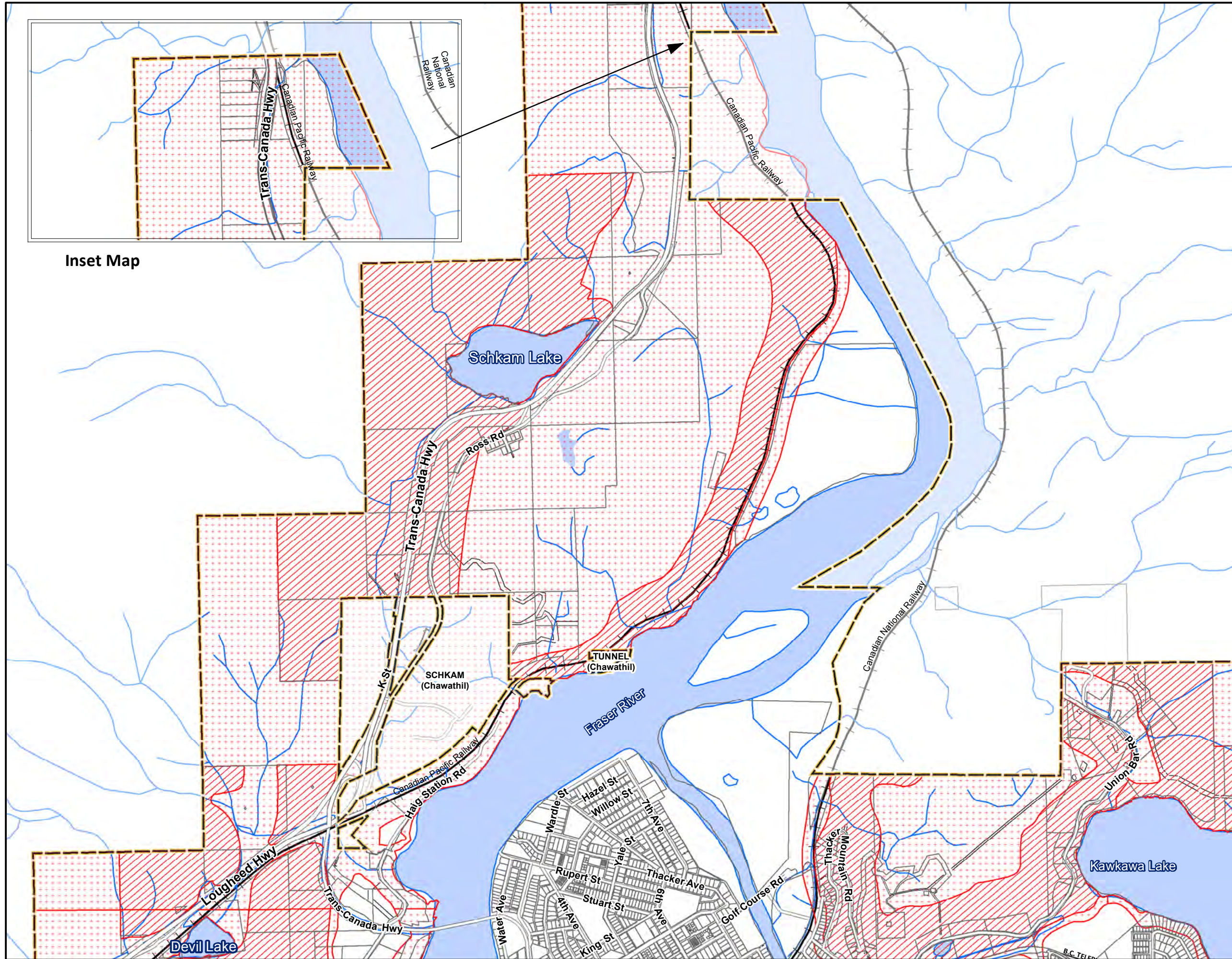


# District of Hope Geotechnical Hazard Areas

Map 5



Inset Map



- Streams
- Lakes/Rivers
- District of Hope
- Geotechnical Hazard Areas**
- No Apparent Geotechnical
- Uncertain Geotechnical Hazard
- High Geotechnical Hazard
- Rock Slide Limit Line

Prepared by Modus Planning, Design  
& Engagement Inc.

Hillshade imagery and Freshwater Atlas information is from  
[openmaps.gov.bc.ca](http://openmaps.gov.bc.ca) and [geobc.gov.bc.ca/base-mapping/atlas/fwa/](http://geobc.gov.bc.ca/base-mapping/atlas/fwa/)

Additional fish stream information is from the Comunity  
Mapping Network and Fraser Valley Regional District (2012):  
[cmnbc.ca/atlas\\_gallery/fraser-valley-regional-district-habitat](http://cmnbc.ca/atlas_gallery/fraser-valley-regional-district-habitat)

Disclaimer: The data provided has been compiled from various  
sources and may not be complete or accurate. The District of Hope is  
not responsible for any errors, omissions, or deficiencies in the data.

